

SINGAPORE CLINICAL RESEARCH INSTITUTE

JUNE 2025



OVERVIEW OF SCRI



Research Coordination

MISSION



Research Operations

ORGANISATION

**National
Coordination
Office**

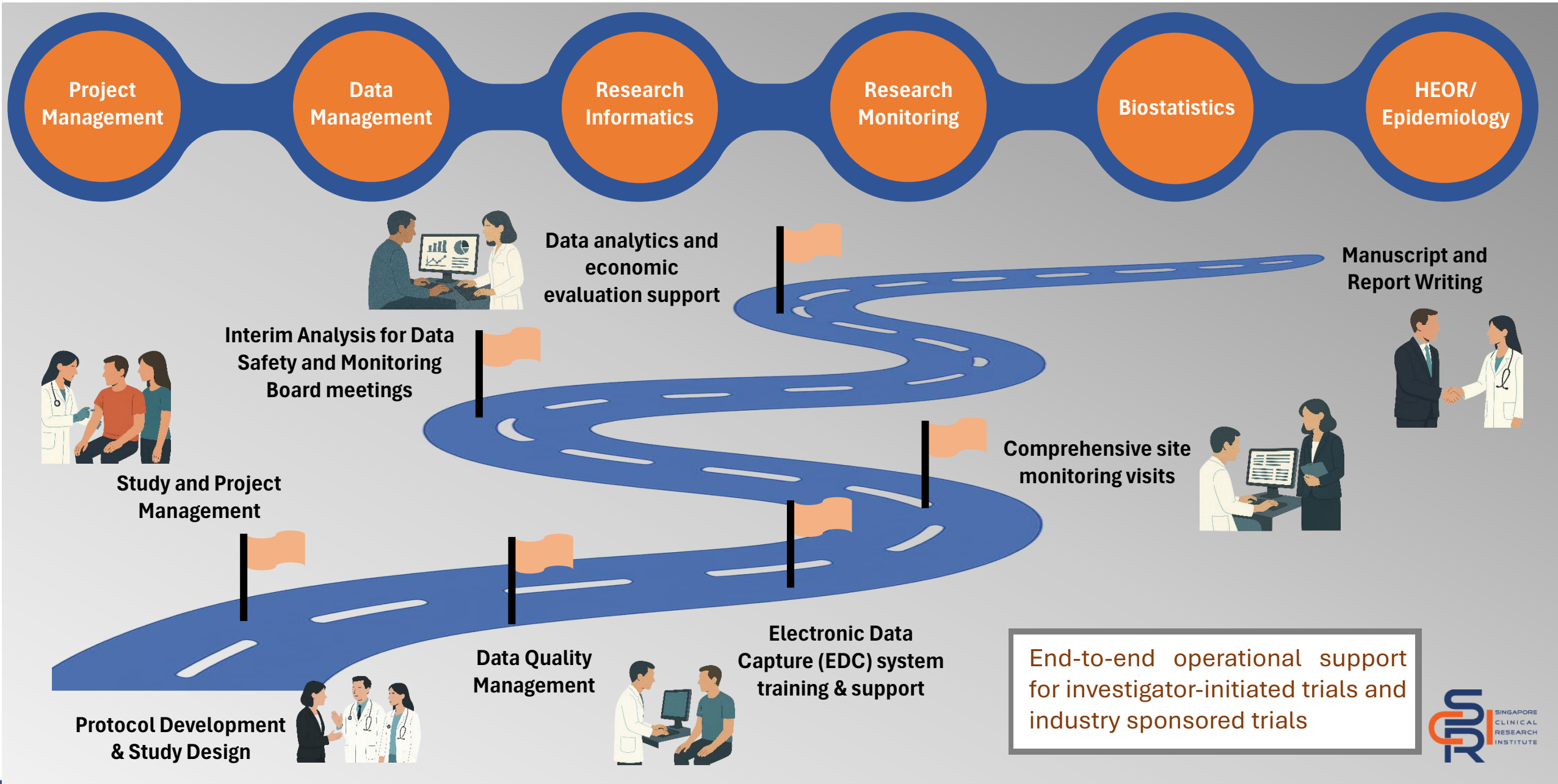
**Clinical
Research
Networks**

SCRI Academy

**Academic
Research
Organisation**

**Clinical
Research
Analytics Group**

ACADEMIC RESEARCH ORGANISATION



SCRI SUPPORTED CLINICAL TRIAL NETWORKS

NETWORKS COVER 26 COUNTRIES IN ASIA PACIFIC

ASIA-PACIFIC GYNECOLOGIC ONCOLOGY TRIALS GROUP (APGOT)

8 Countries



A/Prof David Tan

ASIAN MYELOMA NETWORK (AMN)

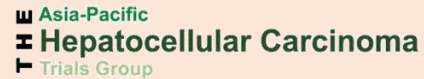
10 Countries



Prof Chng Wee Joo

ASIA-PACIFIC HEPATOCELLULAR CARCINOMA TRIALS GROUP (AHCC)

17 Countries



Prof Pierce Chow

ASIAN THORACIC ONCOLOGY RESEARCH GROUP (ATORG)

6 Countries



A/Prof Daniel Tan

ADVANCING CLINICAL EVIDENCE IN INFECTIOUS DISEASES (ADVANCE-ID)

19 Countries



Prof David Paterson

ASIA PACIFIC CARDIOVASCULAR RESEARCH NETWORK (ASPIRE)

6 Countries



Prof Derek Hausenloy



New Zealand

SCRI SUPPORTED CLINICAL REGISTRY NETWORKS

NETWORKS COVER 21 COUNTRIES IN ASIA



**PAN-ASIAN RESUSCITATION
OUTCOMES STUDY NETWORK
(PAROS)**
14 Countries



Dr Marcus Ong

**PEDIATRIC ACUTE & CRITICAL CARE
MEDICINE ASIAN NETWORK
(PACCMAN)**
13 Countries



Dr Lee Jan Hau

**DECIPHERING DIVERSITIES: RENAL
ASIAN GENETICS NETWORK (DRaGON)**
9 Countries

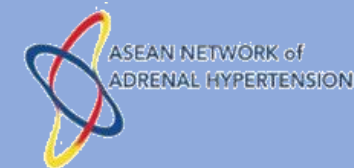


Dr Ng Kar Hui

**PEDIATRIC INFLAMMATORY BOWEL
DISEASE NETWORK (PIBD)**
6 Countries

Dr Marion Aw

**ASEAN NETWORK OF ADRENAL
HYPERTENSION (ANAH)**
9 Countries



Dr Troy Puar

**INHERITED CANCERS
NETWORK ASIA (ICaN Asia)**
8 Countries



A/Prof Joanne Ngeow



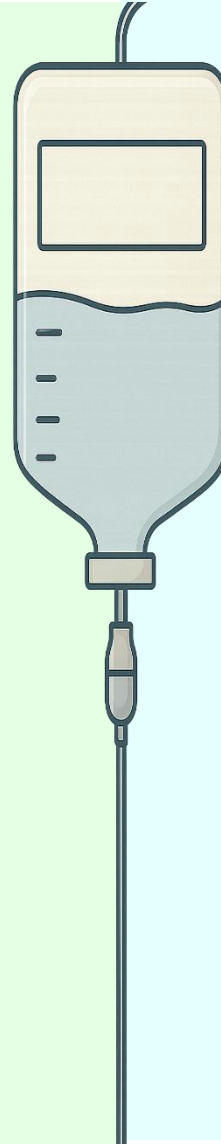
CLINICAL RESEARCH COORDINATORS (CRCs) TRAINING AND DEVELOPMENT PROGRAMMES

CRC Internship
Programme

CRC Onboarding
Programme

CRC Alumni
Network

CRC Educators
Programme



HEALTH ECONOMICS AND OUTCOMES RESEARCH TRAINING

SCRI is the national host for the Singapore chapter for Cochrane, the international organisation that enables the analysis of data to generate reliable evidence that can be used to make informed clinical decisions.

SCRI conducts Basic and Advanced Cochrane workshops annually and has training collaborations with Academy of Medicine Singapore (AMS), SingHealth, Tan Tock Seng Hospital and the Duke-NUS Graduate Medical School.



Launched on 30 July 2024 at the inaugural SCRI Clinical Trials Symposium by GOH DPM Heng Swee Keat

Crafted to cater to patients, caregivers, clinical investigators and companies, CTSG is dedicated to making clinical trial information more accessible and understandable. By demystifying the clinical trial landscape, CTSG hopes to encourage greater interest in clinical trials, fostering innovation and improving health outcomes.



For Patients looking for
(1) Clinical trials to participate in
(2) Educational materials for patients and general public about participating in clinical trials

Participating in Clinical Trials

Help to shape the future of medical care as a patient, caregiver or a member of the general public through clinical trials

[I Am a Patient or Caregiver ↗](#)



Sponsoring Clinical Trials

Partner with us as a clinical trial sponsor to pioneer groundbreaking medical advancements together

[I Am a Trial Sponsor ↗](#)

For Trial Sponsors looking to conduct clinical trials in Singapore

- (1) Biorepository Catalogue – Platform with established sample / image repository
- (2) Clinical Investigator database to facilitate collaborations



For Clinicians looking for
(1) Training resources and information on the conduct of clinical trials

Conducting Clinical Trials

Step forward as a clinical investigator to redefine the future of medical research

[I Am a Clinical Investigator ↗](#)

Thank You

Our SCRI brands:



If you wish to work with us, please contact us at:



Email: biz@scri.cris.sg

Websites: www.scri.edu.sg
clinicaltrials.sg
<https://singapore.cochrane.org>