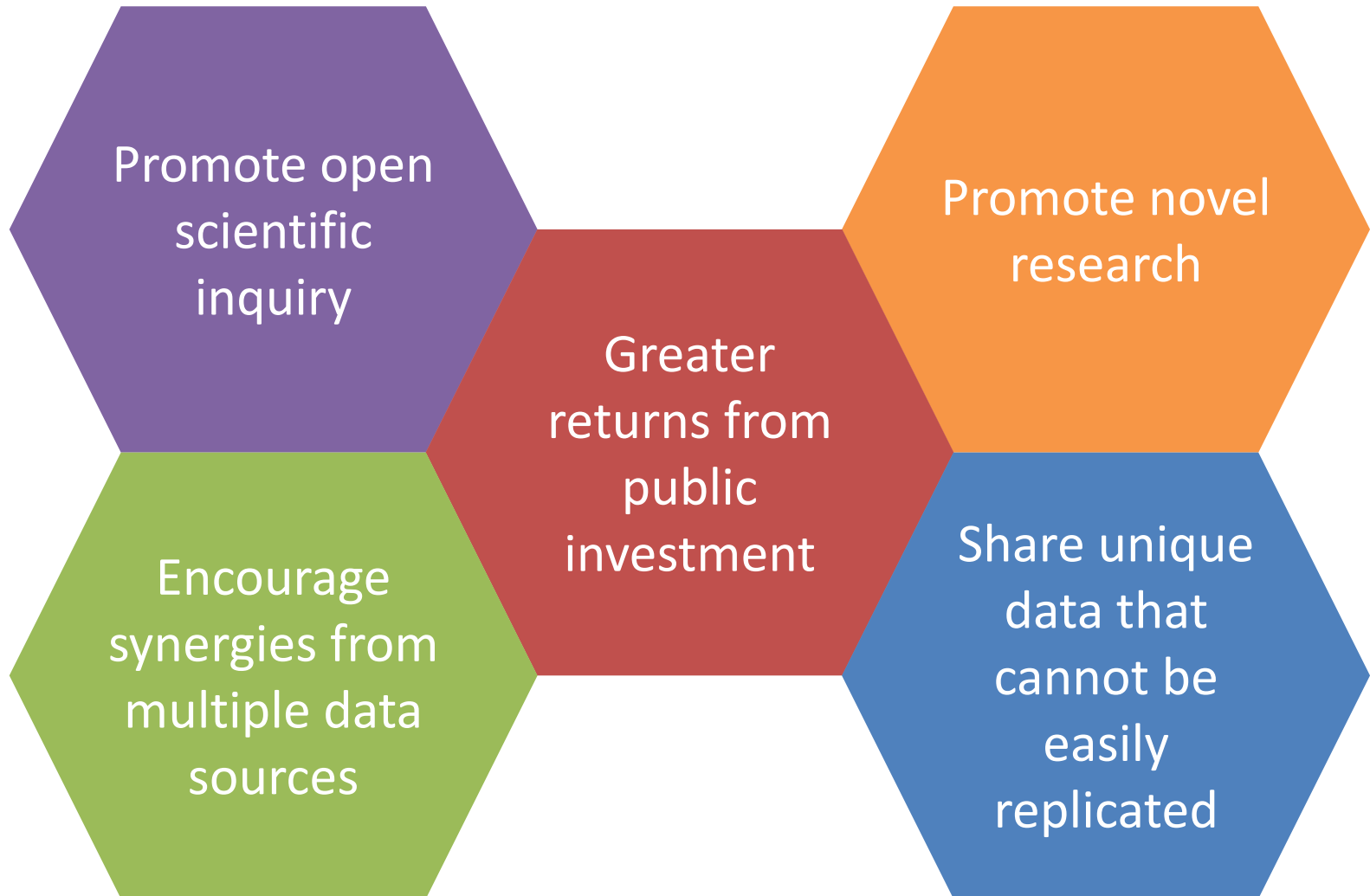


Implementation of Framework for Research Data Governance and Sharing

Benefits of Data Sharing



Implementation – 2-Phase Approach

Phase 1

**Requirement of Open Access
of Publication**

Involves all existing or new projects

May 2015

Phase 2

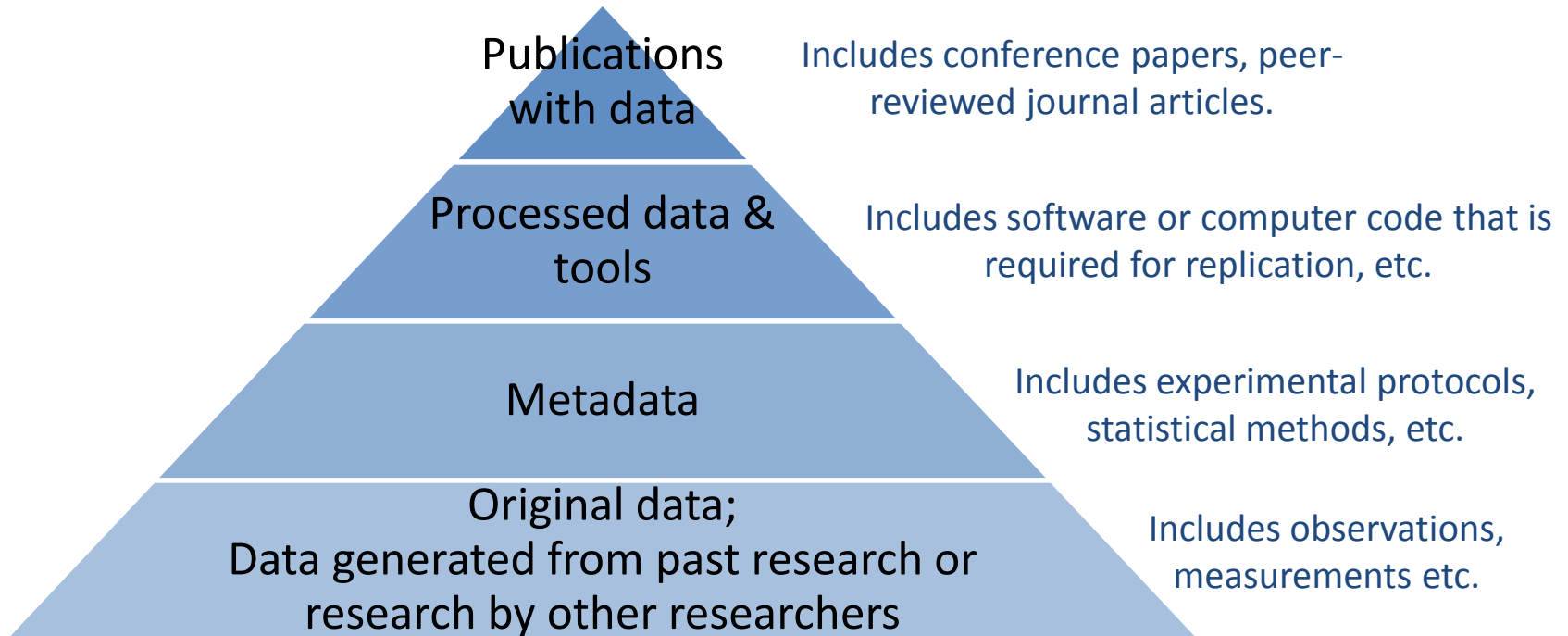
**Requirement of
Sharing of Dataset**

Involves new projects seeking funding
of \$250,000 and above

Nov 2015

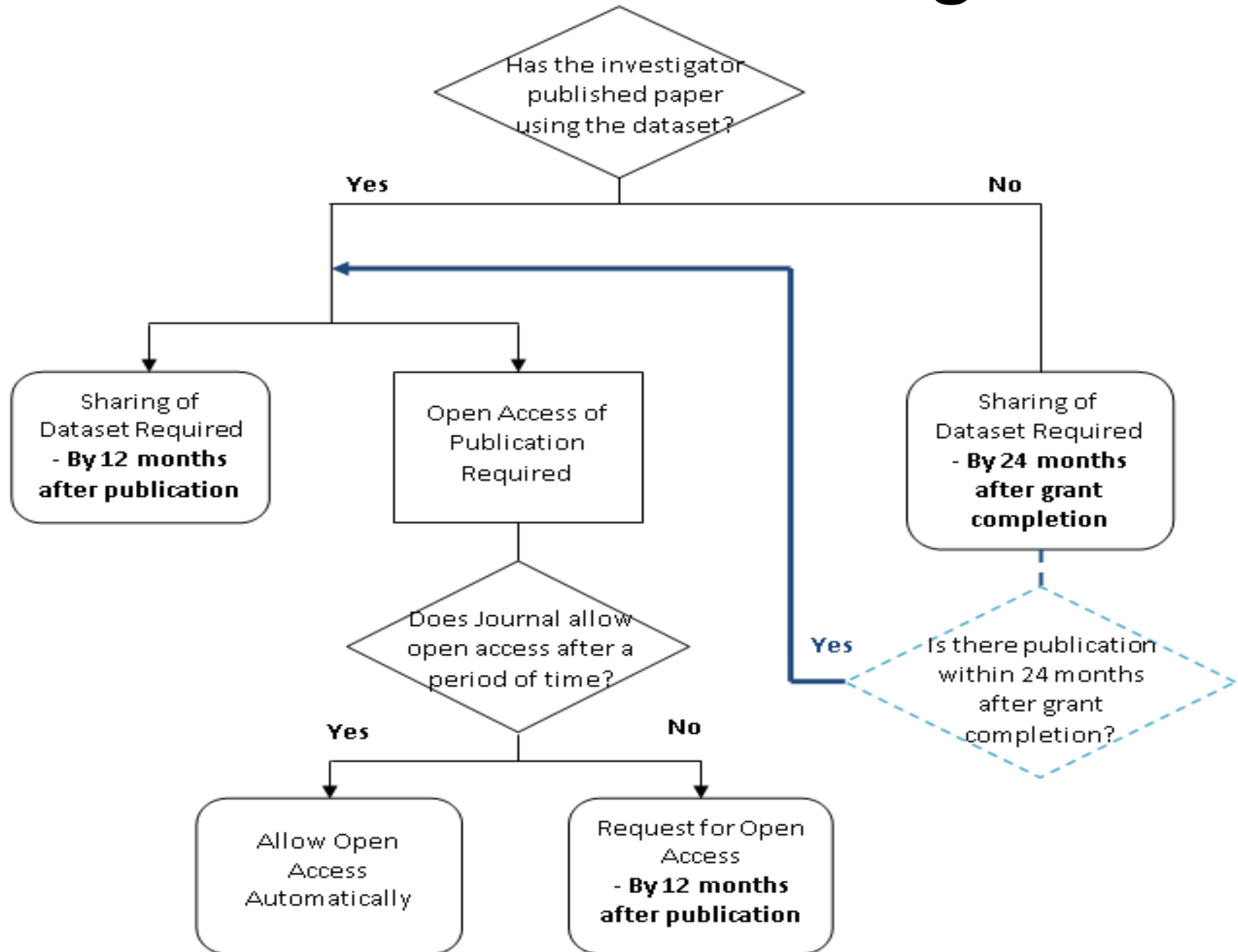
What is Research Data?

Recorded factual material commonly accepted in the scientific community as necessary to document and support research findings.



Does not include laboratory notebooks, preliminary analyses, drafts of scientific papers, plans for future research, peer review reports, communications with colleagues, or physical objects, such as gels or laboratory specimens

Workflow of Sharing



Principles for Research Data Sharing



I. Timeliness



II. Human Subjects and Privacy



IV. Governance of Data Access



III. Methods of Sharing

Implementation

Implement through integration into MOH NMRC's grant processes

Applications requesting **at least S\$250,000** of direct research cost must include a Data Sharing Plan



Data Sharing Plan to show how investigators will meet data sharing responsibilities

Data Sharing Plan Template

**Data Sharing
Plan**

Type of Study & Data

- Type of study
- Type of data

Review

Data Sharing and Access

- Suitability for sharing
- Timeframe for sharing
- Format of data
- Method of sharing
- Access of data and governance
- Human subject and privacy
- Budget considerations

Compliance

Review of Data Sharing Plan

Data Sharing
Plan



Review

Compliance

- Review by Local Review Panel or equivalent body
- Assess independently from the proposed research
- Mandatory requirement for award of the grant

Review of Data Sharing Plan



- If Data Sharing Plan is unsatisfactory, comments from the panel discussion will be sent to the applicant.
- Applicant will be required to revise Data Sharing Plan during the budget revision stage.
- Revised Data Sharing Plan will be re-assessed by the Local Reviewers.

Compliance of Data Sharing



Monitor progress and compliance via progress/final reports