



NHMRC accredited Advanced Health Research and Translation Centre



MACH
Melbourne Academic Centre for Health

Comparison of Clinician Scientist pathways: Singapore versus UK and Australia

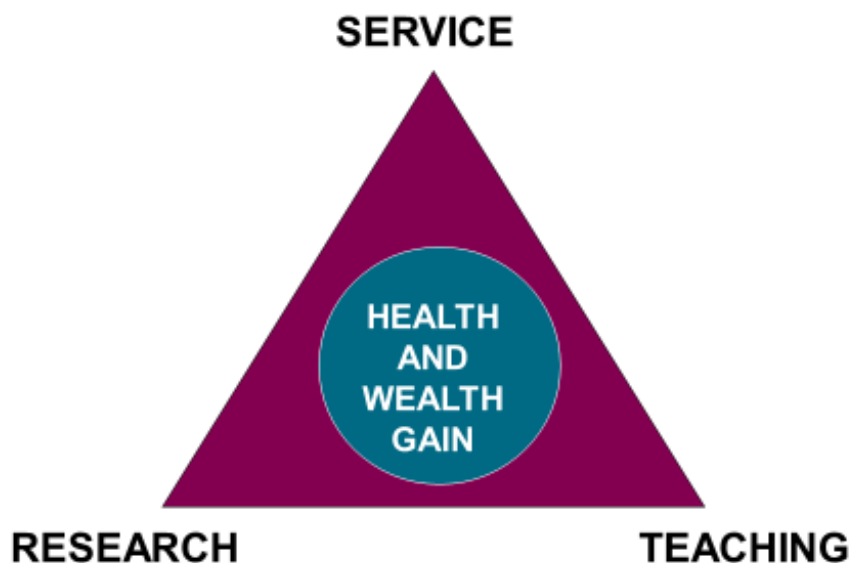
Prof Sir John Savill
Melbourne Academic Centre for Health



www.machaustralia.org



The clinical academic triangle



1. Find your theme – and secure excellent training.
2. Be prepared to grab opportunities and mentors
3. Help other clinician researchers – esp the young.

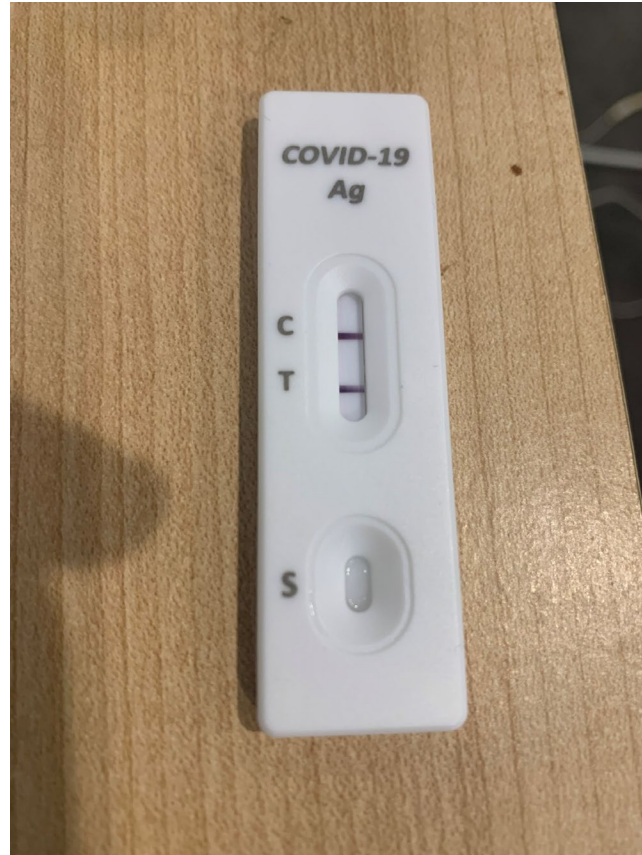
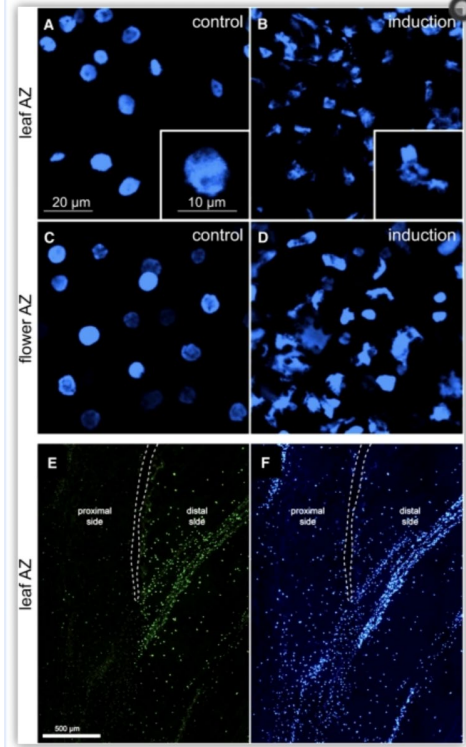




Figure 4.



Leaf Abscission

Programmed Cell Death



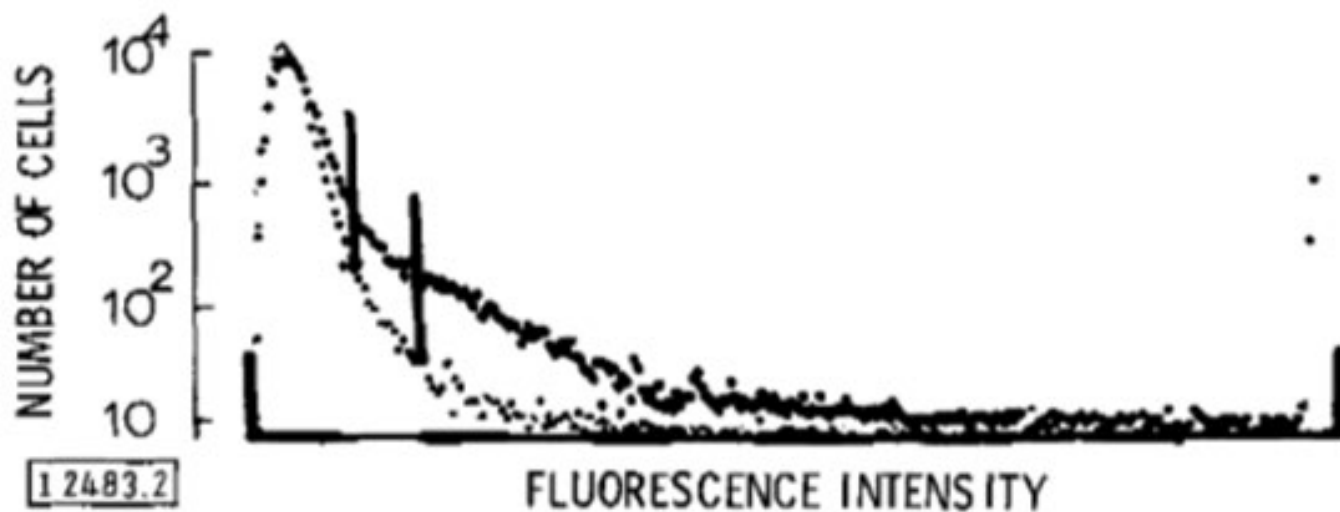
Oxford 1975-78





Thy-1 on rat lymphoid stem cells

855





Sheffield 1978-83



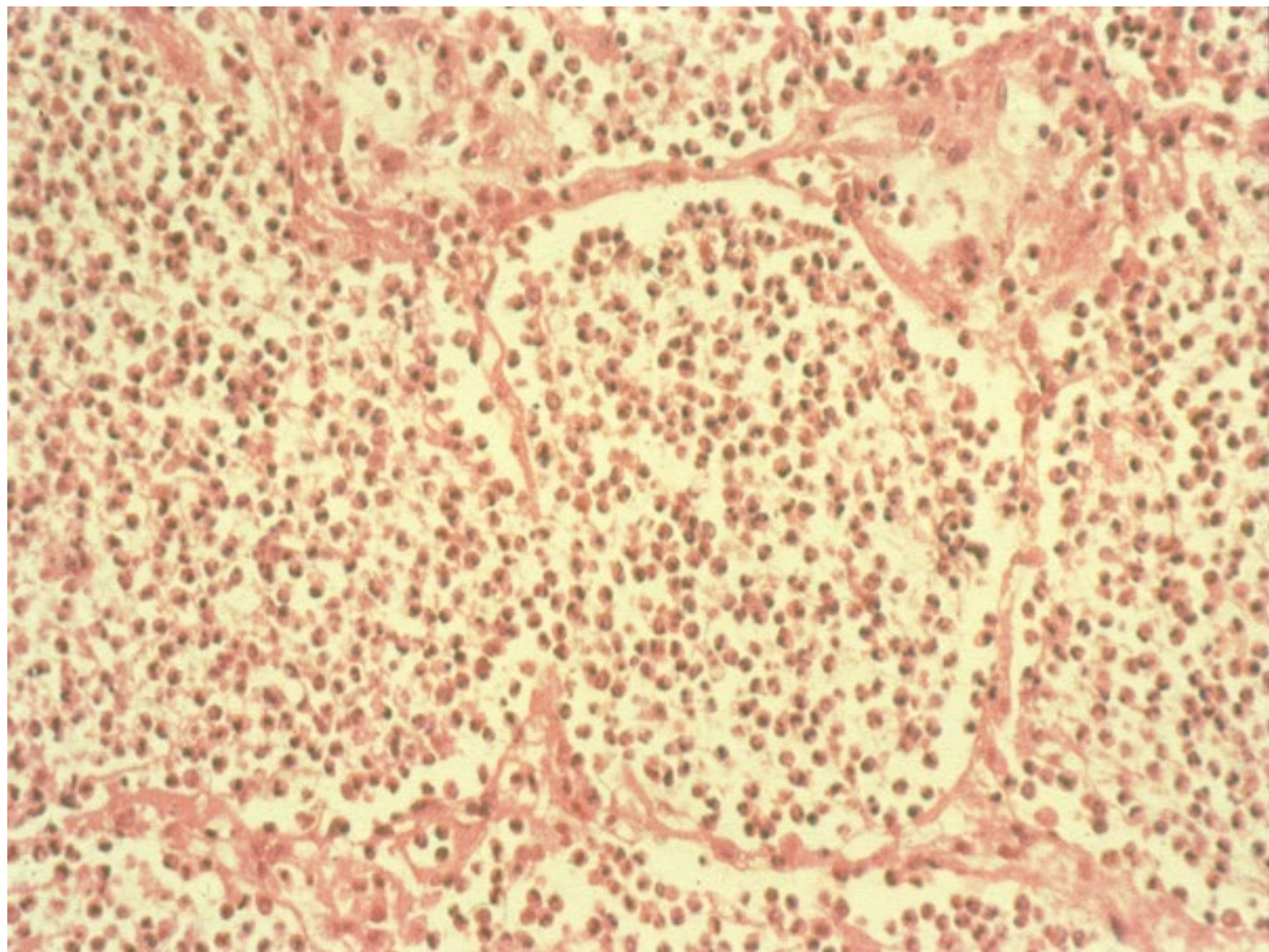
Finding a Theme and Excellent Training

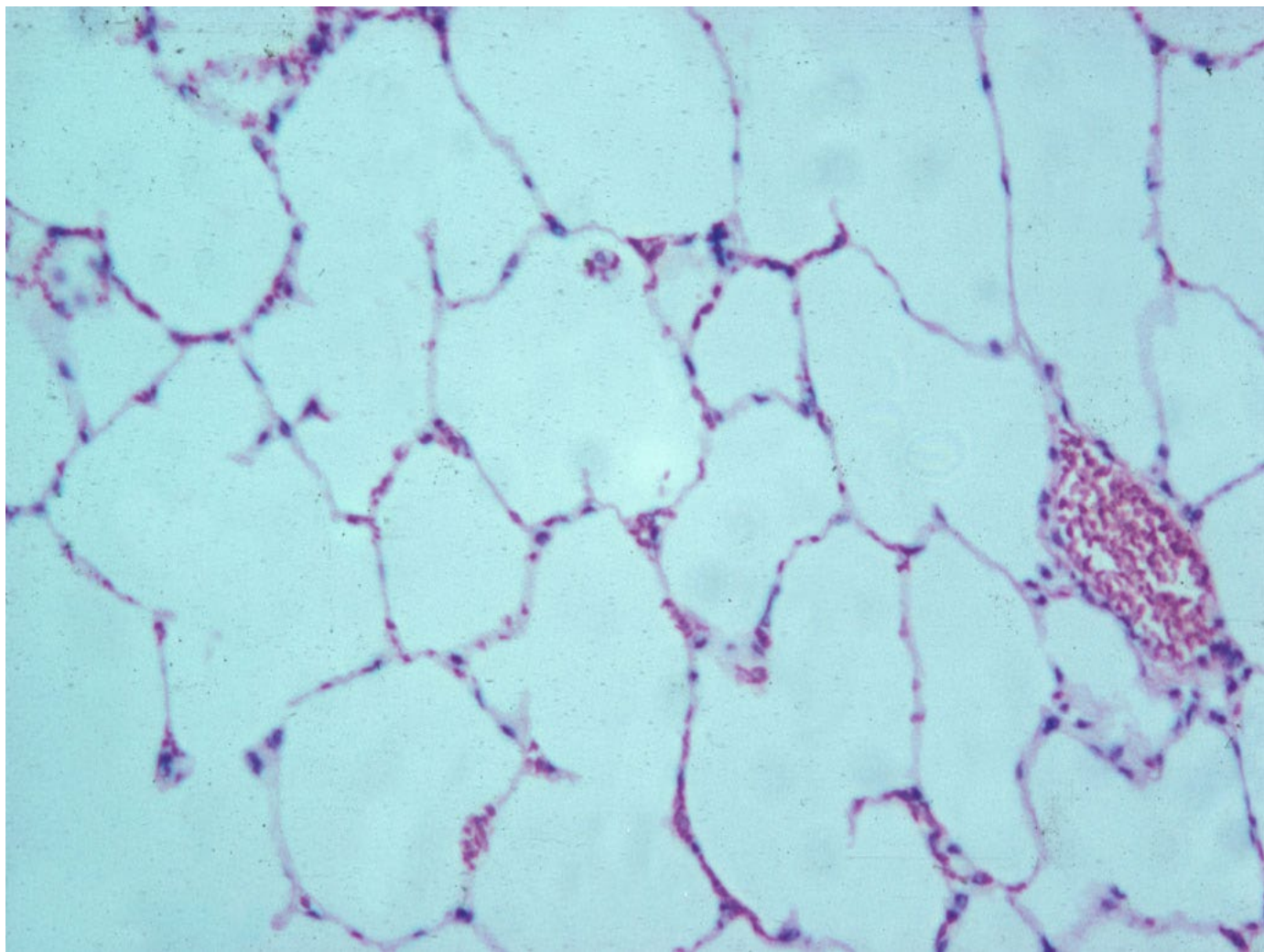
1973-75	Twickenham – 6 th Form College
1975-78	Oxford – BA Physiological Sciences
1978-81	Sheffield – MB ChB Honours & Pathology Prize
1981-84	Sheffield & Nottingham – Junior Doctor
1984-86	Ealing & Hammersmith – Registrar Renal/General
1986-89	MRC Training Fellow – PhD & on-call
1989-90	Hammersmith – Senior Registrar Renal/General
1990-93	Wellcome Senior Fellow & Honorary Consultant

RPMS London 1985-93

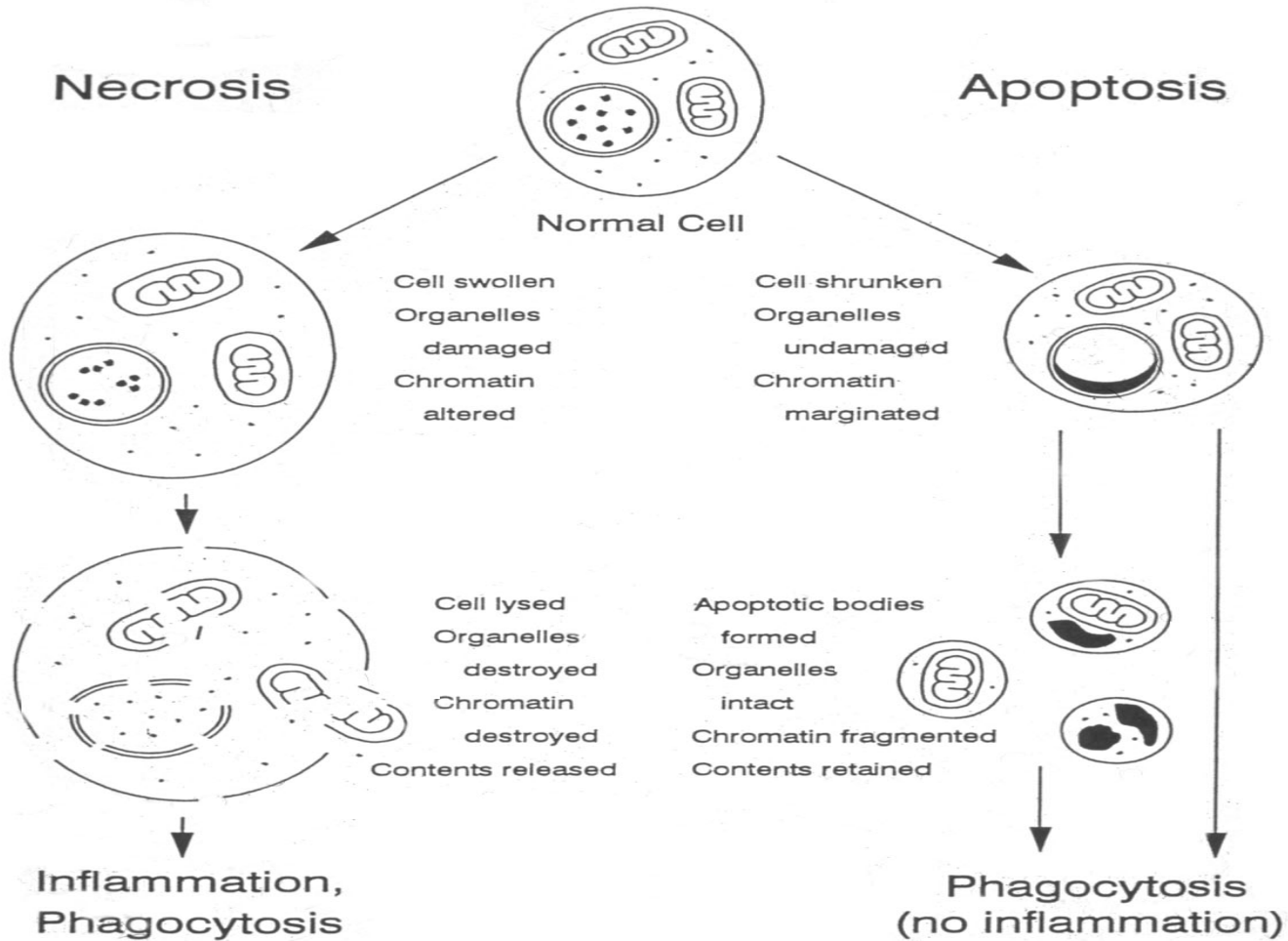


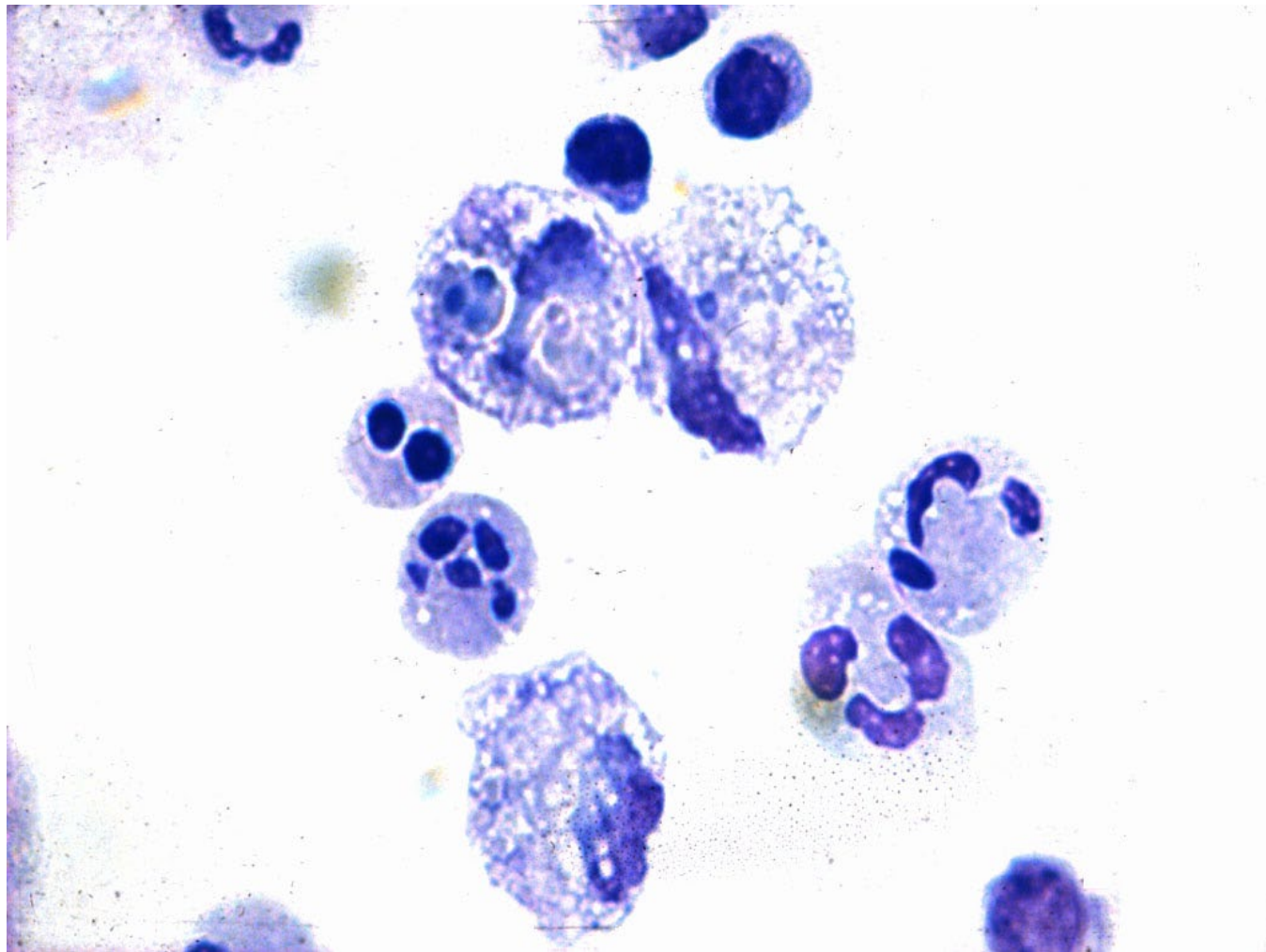




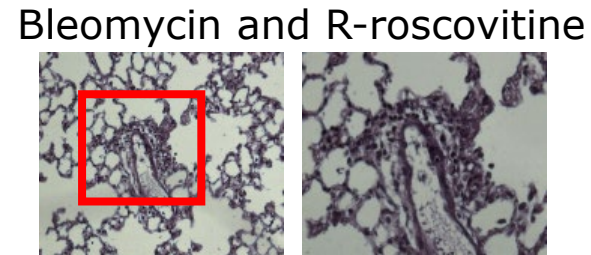
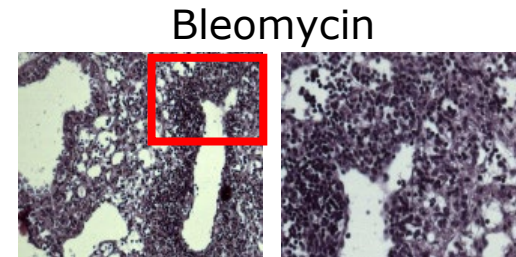
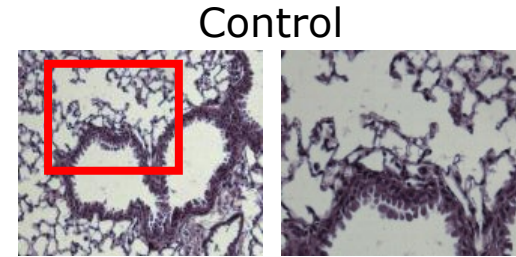
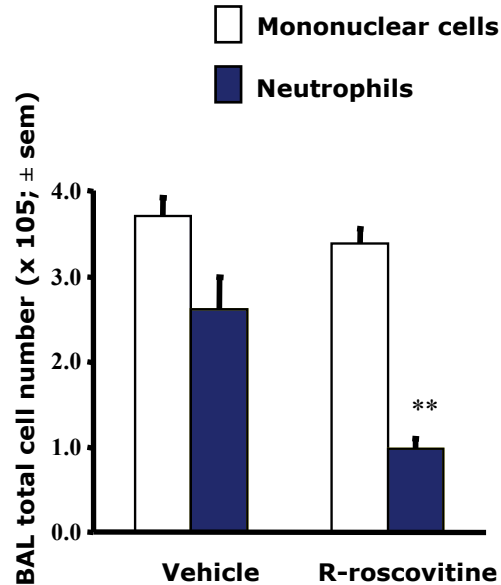








R-roscovitine promotes the resolution of neutrophilic-dependent inflammation in a bleomycin mouse model of lung inflammation



Rossi et al (2006) *Nat Med.* 12(9):1056-64

Driving resolution of inflammation

- 1985 – Observation of neutrophil apoptosis
- 1989 – Original *J Clin Invest* paper
(>1,000 citations)
- 1990 – Apoptosis is regulated by external stimuli
- 1994 – Animal model of resolution through apoptosis
- 2006 – Driving resolution by driving apoptosis
- 2010 – MRC Experimental Medicine study in idiopathic pulmonary fibrosis
- 2014 - Study stopped - toxicity



SIR PETER RATCLIFFE

Nobel Prize in Physiology or Medicine 2019



“Clinical research is a long game”



Help Other Clinical Researchers

- 1993-1998 Nottingham – Professor of Medicine; New Unit
- 1998-2002 Edinburgh – Professor of Medicine; HoD
- 2000-2002 Edinburgh – MRC Centre for Inflammation Research
- 2002-2018 Edinburgh - Head of College
- 2002-2007 MRC - Chair of Research Boards
- 2008-2010 Scottish Government – Chief Scientist Health (NHS R&D)
- 2010-2018 MRC – Chief Executive
- 2019- ED Melbourne Academic Centre for Health



**The Academy of
Medical Sciences**

THE TENURE-TRACK CLINICIAN SCIENTIST:

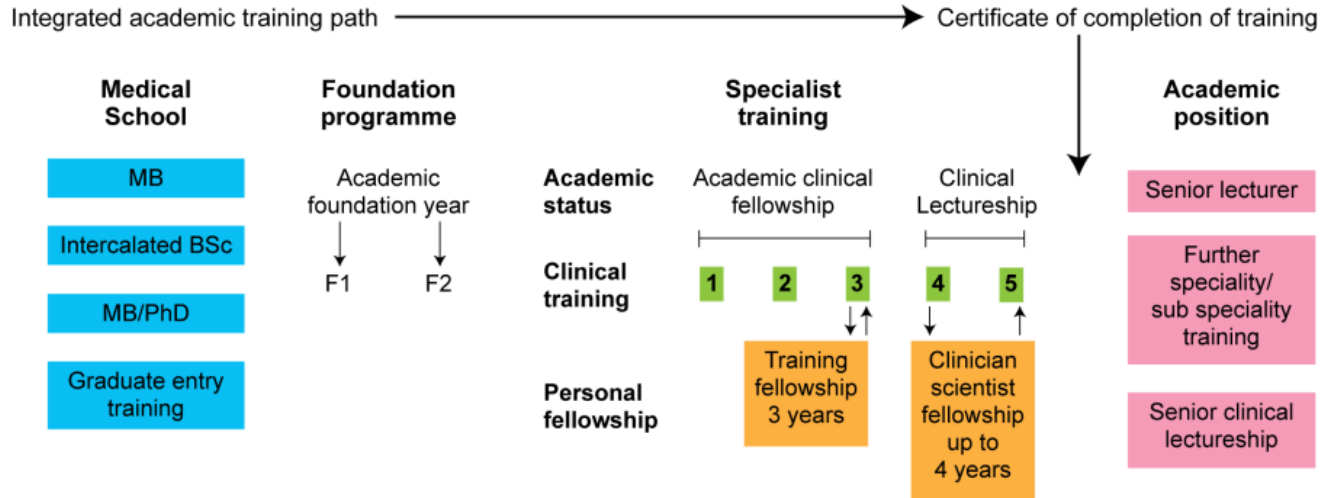
A NEW CAREER PATHWAY TO
PROMOTE RECRUITMENT INTO
CLINICAL ACADEMIC MEDICINE

*First edition: published on the Academy's web site
www.acmedsci.ac.uk*

4th March 2000



WALPORT INTEGRATED ACADEMIC TRAINING PATHWAY FOR RESEARCHERS



Note: the timings of personal fellowships are indicative. There should be flexibility according to individual career progression

Driver for...

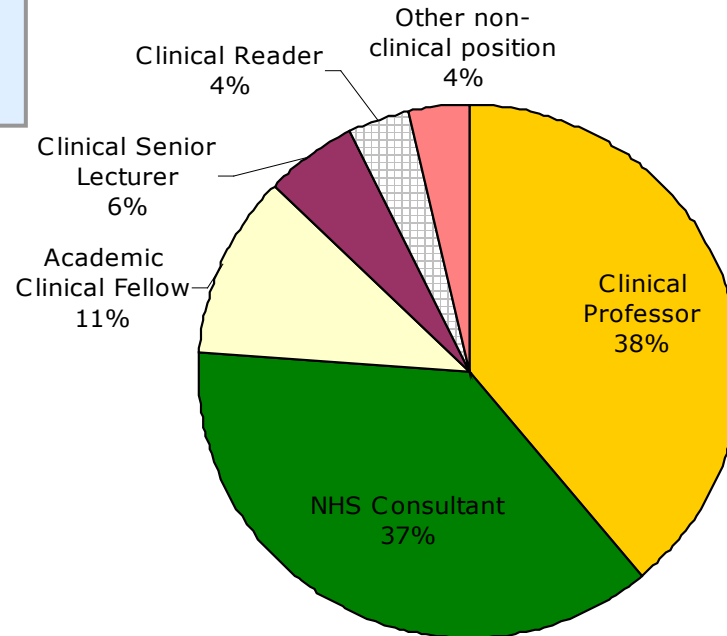
- Academic Foundation Year programmes
- A pool of academic NTN in designated specialties for ACFs
- An expanded cohort of Lectureships

Great outcomes Example - for sample of MRC clinician PhDs (CRTFs) training in 1993 - 2003

Effect on career: Most = "Significant" or "Very Significant"

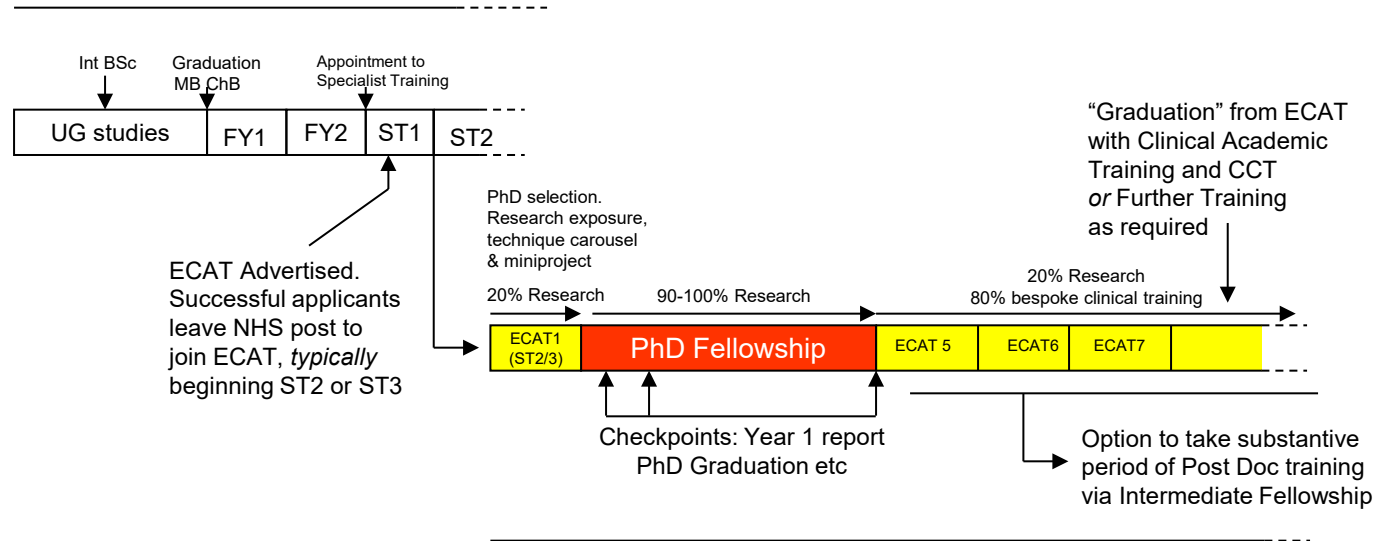
- 65% now hold a senior academic position
- 27% are NHS consultants
- 85% are both clinically and research active
- 76% are leading research
- 63% have secured further funding

Current Positions of CRTF Class of 1993

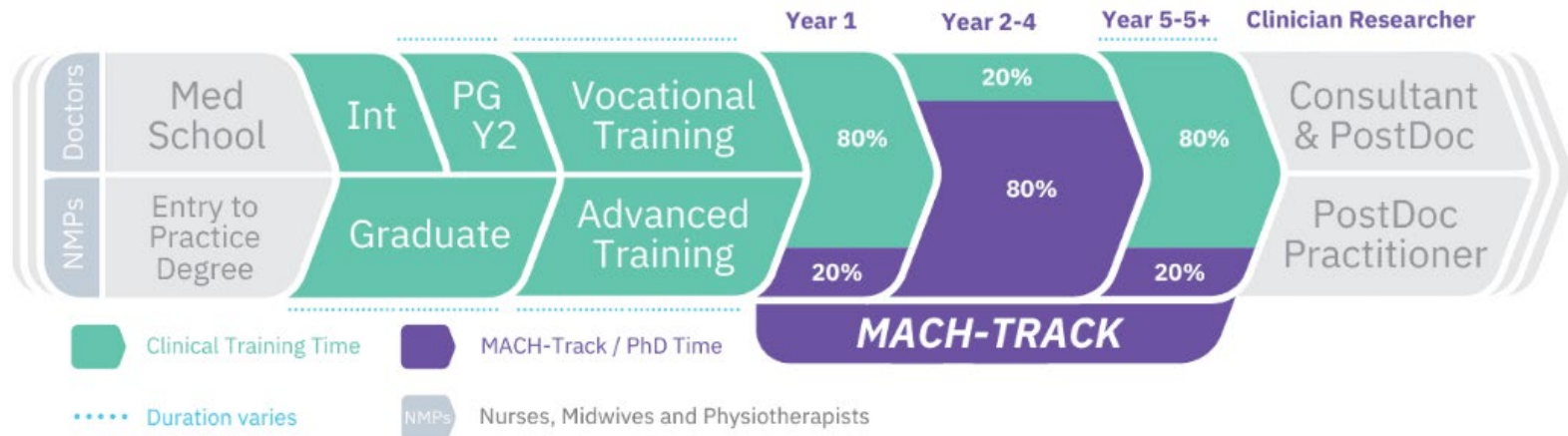


Structure of the Edinburgh Clinical Academic Track (ECAT) scheme

“Standard” Post MMC NHS Specialist Training

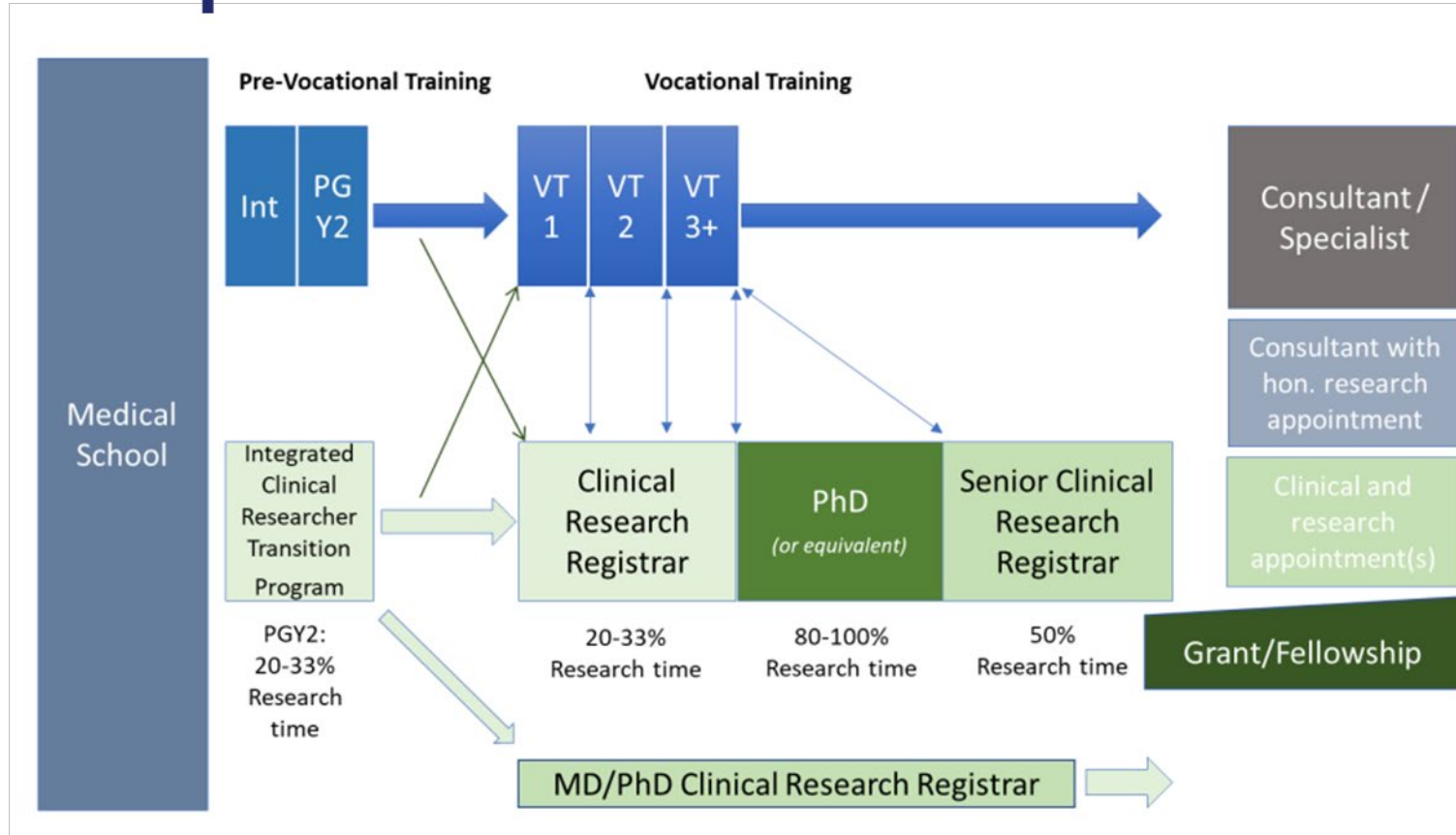


ECAT Lectureship



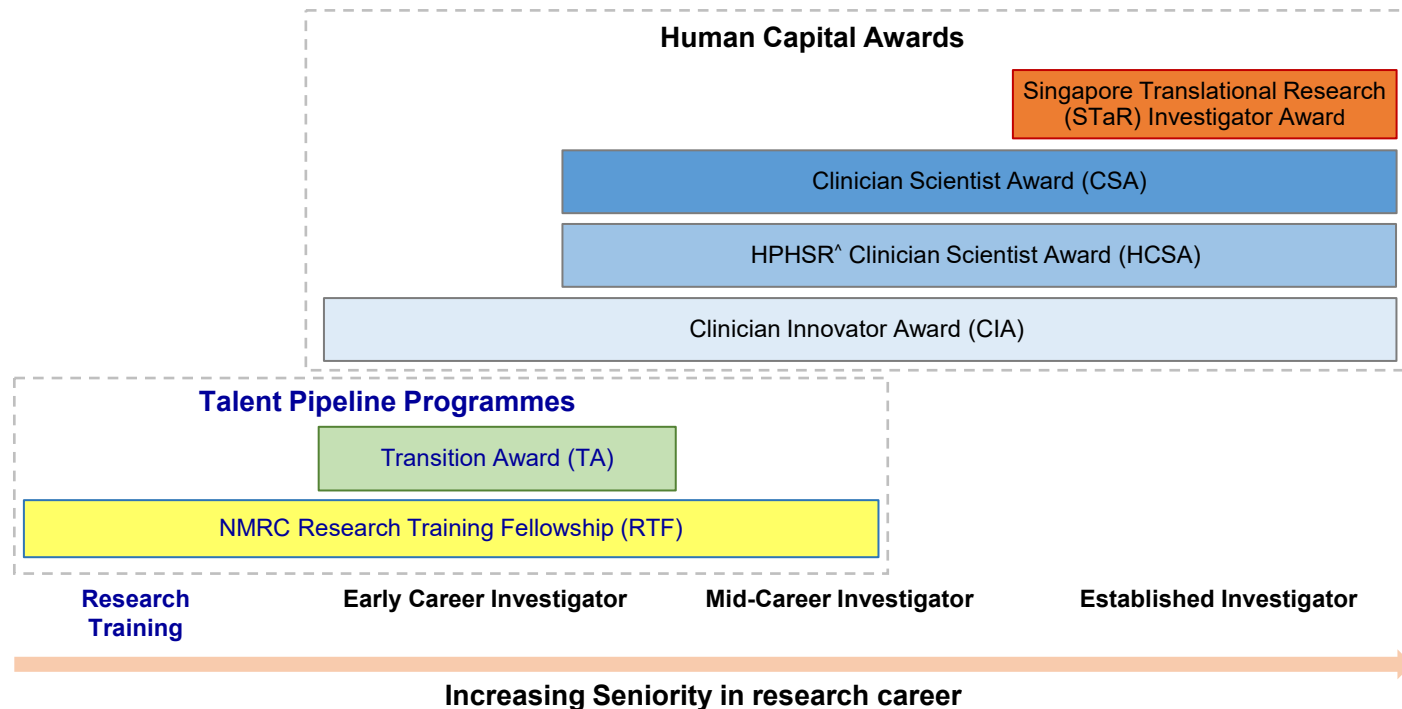


Go8 Proposed Track



RIE2025 NMRC Talent Programmes

The NMRC Office administers a range of talent programmes aimed at supporting individuals in their research and career progression. These programmes are as follows:



Conclusions

1. Singapore now has university-based training opportunities that stimulate interest in research amongst most health professional groups
2. NMRC provides clinician-scientists with a “talent ladder” comparable to the UK and superior to Australia
3. Singapore has world-class environments in which to develop leading clinician-scientists
4. Singapore still has work to do on managing balance of clinical practice with research and teaching
5. And in developing clinician-scientists from AHP and nursing backgrounds