



# NMRC GRANT CALL

NOV-2021

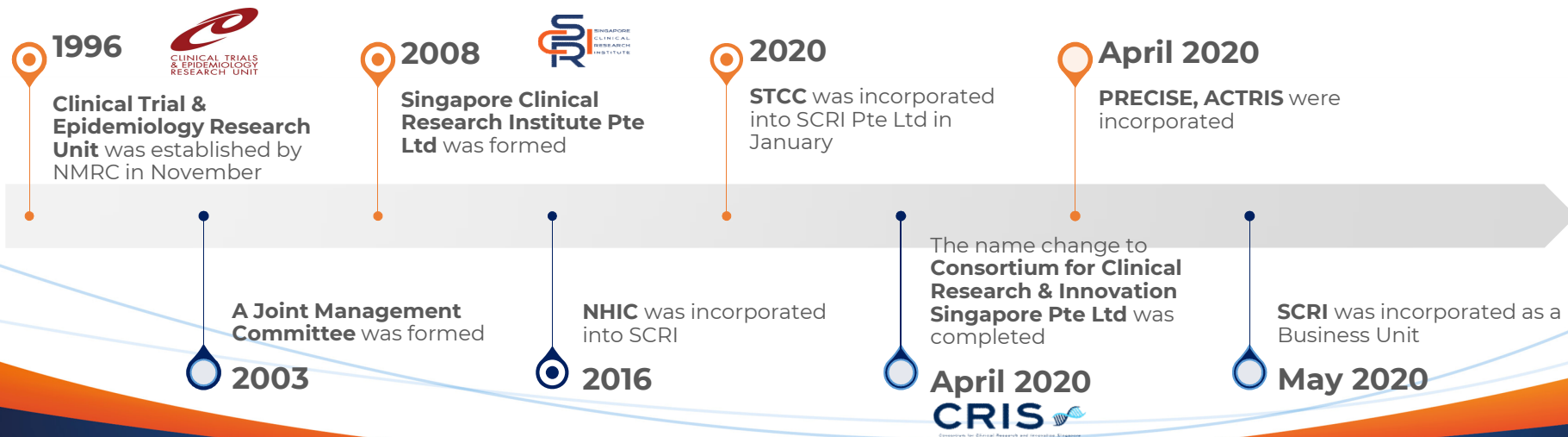
# ABOUT SCRI

## Vision

- To be the ASEAN hub of academically oriented clinical research efforts

## Mission

- To spearhead and develop core capabilities, infrastructure and scientific leadership for clinical research in Singapore





## SCRI AT A GLANCE (Y2018 – 2020)



### 93 Active Studies

- 77 distinct PIs out of 93 active studies
- 42 interventional studies and 27 observational/ registry studies

#### 1. Pre-Grant/ Concept Generation

##### Services provided:

- Biostatistics
- Epidemiology
- Data Management
- Project Management



**139** pre-grant support provided from 2018 to 2020 (approximately 2/3 of PIs continued to work with SCRI upon successful award of grant)



**>\$5m** of successful grant awarded from 2018 to 2020 (some are pending results)

#### 2. Study Execution

##### Services provided:

- Data Management
- Project Management
- Research Informatics
- Research Monitoring



**61** new research operations contracts signed from 2018 to 2020



**\$1.5m** of new contracts in the provision of research ops services from 2018 to 2020

#### 3. Analysis/ Reporting

##### Services provided:

- Biostatistics
- Epidemiology



**116** journal publications from 2018 to 2020



**51** out of 116 publications have Impact Factors of greater than 3

#### 4. Key Enablers: Clinical Research Networks/ SCRI Academy/ National Clinical Trial Coordination

## SCRI EXPERTISE



- Strong experience with IIT & IST, especially **multi cluster/ site trials**
- Ability to work with **vendors/ CROs/ networks**
- Ability to support **multicentre trial studies** & **support multiple therapeutic areas**
- Ability to provide support to Young Investigators



- Ability to **provide flexible services & quick start up time**
- Ability to **provide cost effective clinical research services**
- Provision of **in-house Randomisation system**
- Ability to **provide customised and high quality services**
- Ability to **train investigation site personnel to fulfil study requirements**

# SCRI EXPERTISE

## Niche Areas where SCRI HEOR Supports



Unique HEOR support from SCRI

- Multi-centre HSR studies
- HEE alongside RCTs
- HEE alongside diagnostic test accuracy (DTA) studies



All needed skills & expertise under one roof

- Design for clinical research and health economic evaluation, database development, data management, project management, research monitoring, data analysis and reporting
- Efficient team work and one-stop collaboration

## CONTACT DETAILS

Email: [contact@scri.cris.sg](mailto:contact@scri.cris.sg)

Address: 23 Rochester Park, #06-01. Singapore 139234

# ANNEXES

# 01

## PRE-GRANT/ CONCEPT GENERATION

Supported by our Epidemiology, Biostatistics, Data Management & Project Management teams

1. Pre-Grant/ Concept Generation

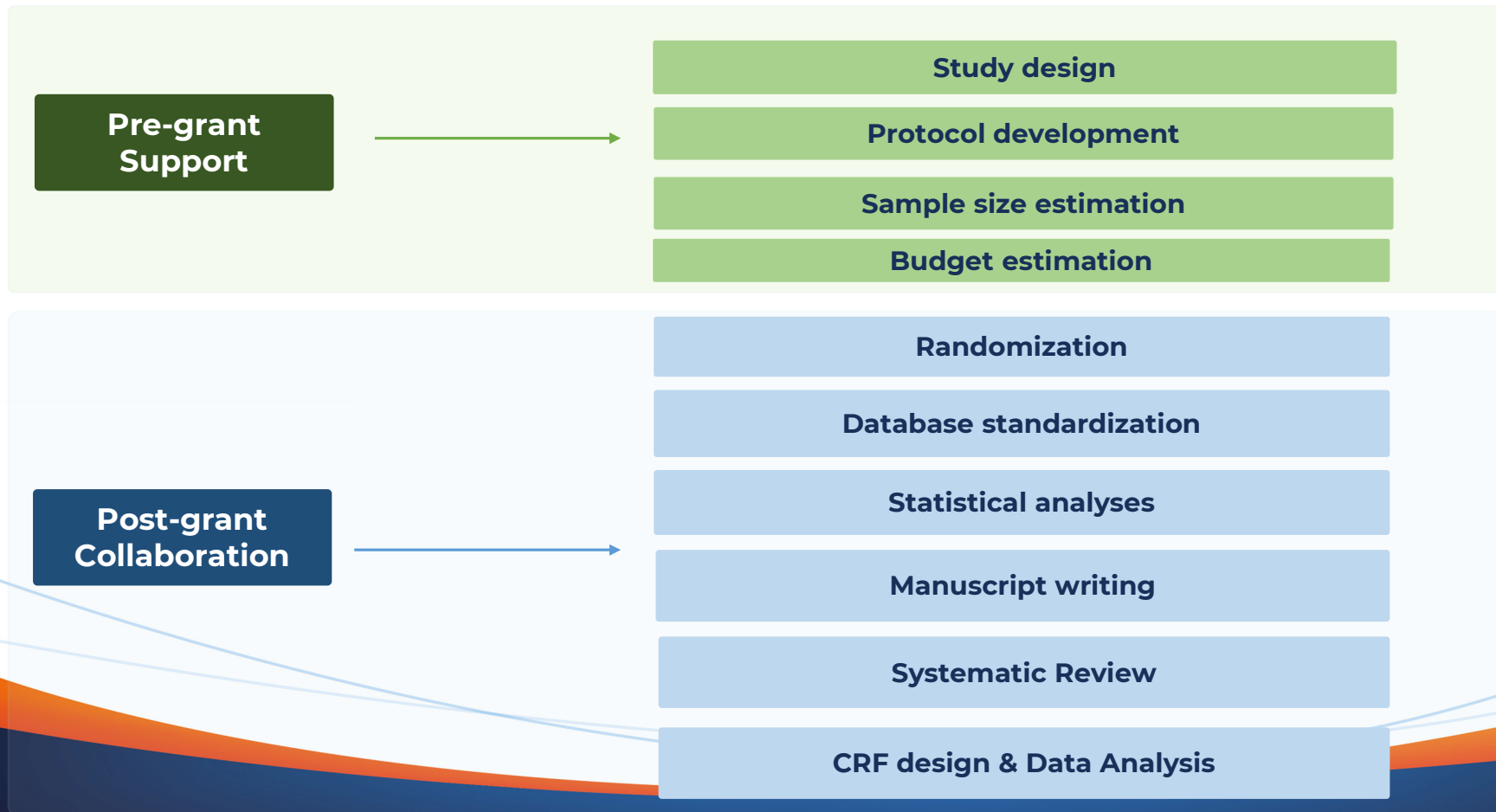
2. Execution

3. Analysis/ Reporting

4. Clinical Research Networks



# 1. PRE-GRANT/ CONCEPT GENERATION FUNCTIONS



# 02

## STUDY EXECUTION

Supported by our Data Management, Project Management, Research Informatics & Research Monitoring teams



## 02. STUDY EXECUTION FUNCTIONS

### Project Management

#### Overall Project Management

- Planning and organisation, monitoring and control of projects from study feasibility to close out
- Managing budget, scope, timeline, risk, quality, resources
- Protocol Preparation and implementation

#### Communication and Stakeholder Management

- Ensure that studies operations are planned properly.
- Manage key stakeholder expectations.
- Maintain communication with all stakeholders.

### Research Monitoring

#### Clinical Trial GCP

- Ensure that all projects adheres to GCP

#### Nurturing Clinical Research Manpower

- Provision of training for investigator and site personnel

#### Data Quality Monitoring

- Ensure that trials are in compliance with protocol, regulatory, IRBs requirement, sponsors guidelines etc.

#### Conduct and perform site feasibility evaluation

- Coordinate and conduct site initiation visit

## 02. STUDY EXECUTION FUNCTIONS

### Data Management

#### Access to Electronic Data Capture Platforms & Subscriptions

- Medidata Rave
- MedDRA & WHO-Drug Dictionary
- SCDM Membership

#### Provide advice and consultation on data management such as:

- Data cleaning strategy
- Database Selection
- CRF/ Data Design

#### Generate Customised Reports to increase data cleaning speed, improve data quality and enhance productivity

- Progress Report
- Data Trend Report
- Backlog Notification

### Research Informatics

#### Information Technology

- Supply of information technology to SCRI clinical research operations to increase productivity

#### Study Databases

- Design and development & manage of study databases to enhance information collection efficiency

#### Support & Maintenance

- Provision of support & maintenance services in relation to clinical research operations
- Provision of technical and user support to clinical research operations including trouble-shooting, analysis and recovery of systems and applications

# 03

## ANALYSIS/ REPORTING

Supported by our Epidemiology & Biostatistics teams

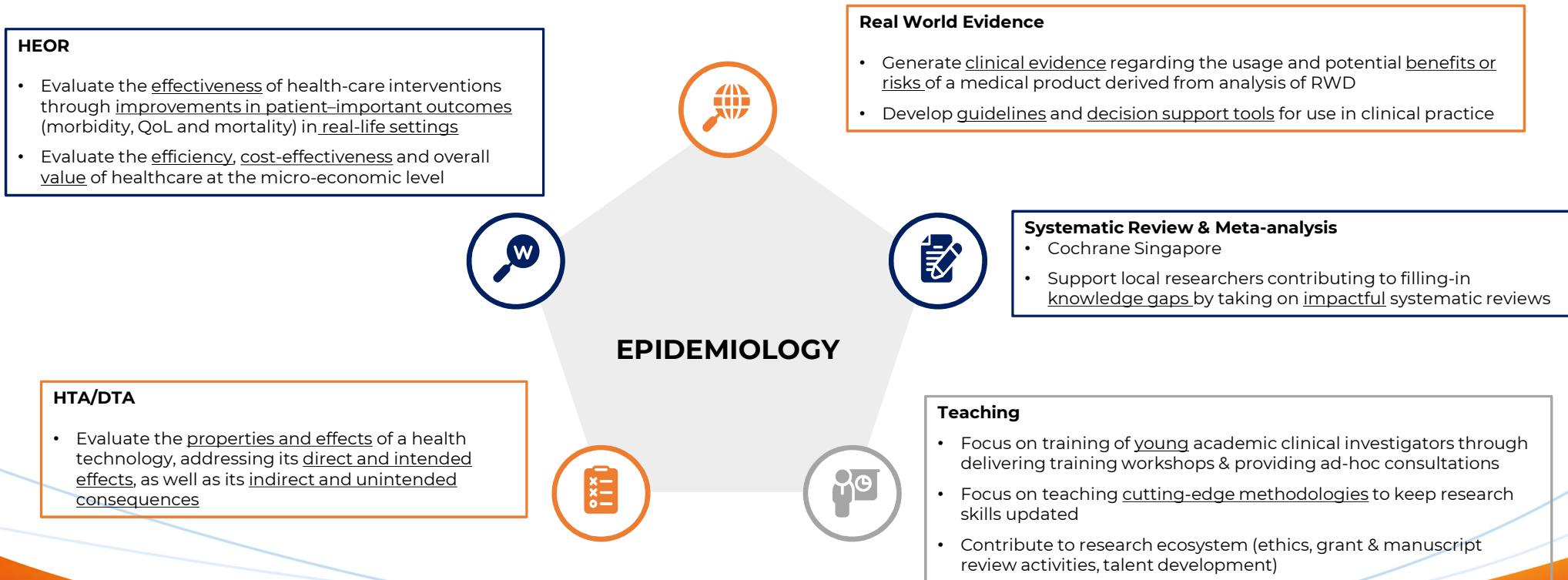
1. Pre-Grant/ Concept Generation

2. Execution

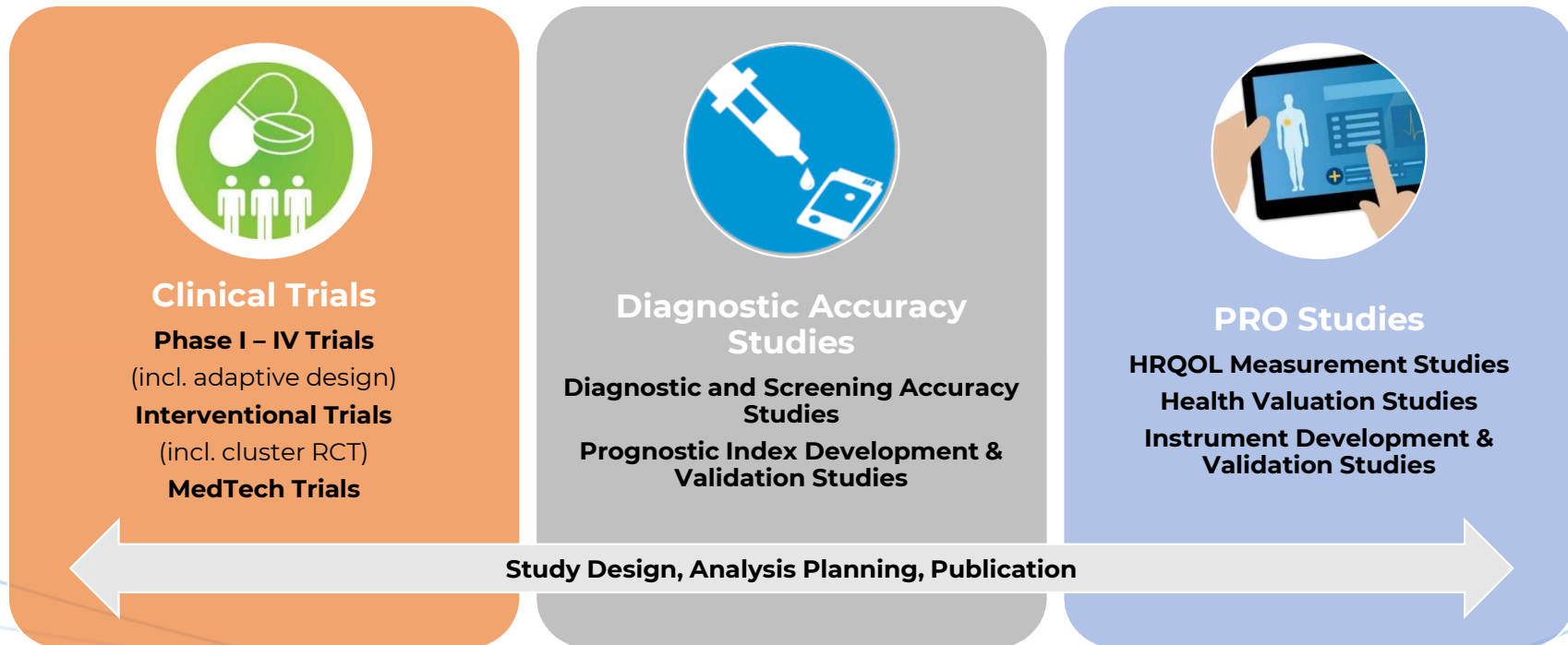
3. Analysis/ Reporting

4. Clinical Research Networks

### 03. ANALYSIS/ REPORTING FUNCTIONS - EPIDEMIOLOGY



### 03. ANALYSIS/ REPORTING FUNCTION - BIOSTATISTIC



# 04

## CLINICAL RESEARCH NETWORKS

Providing research infrastructure to support high quality clinical research

1. Pre-Grant/ Concept Generation

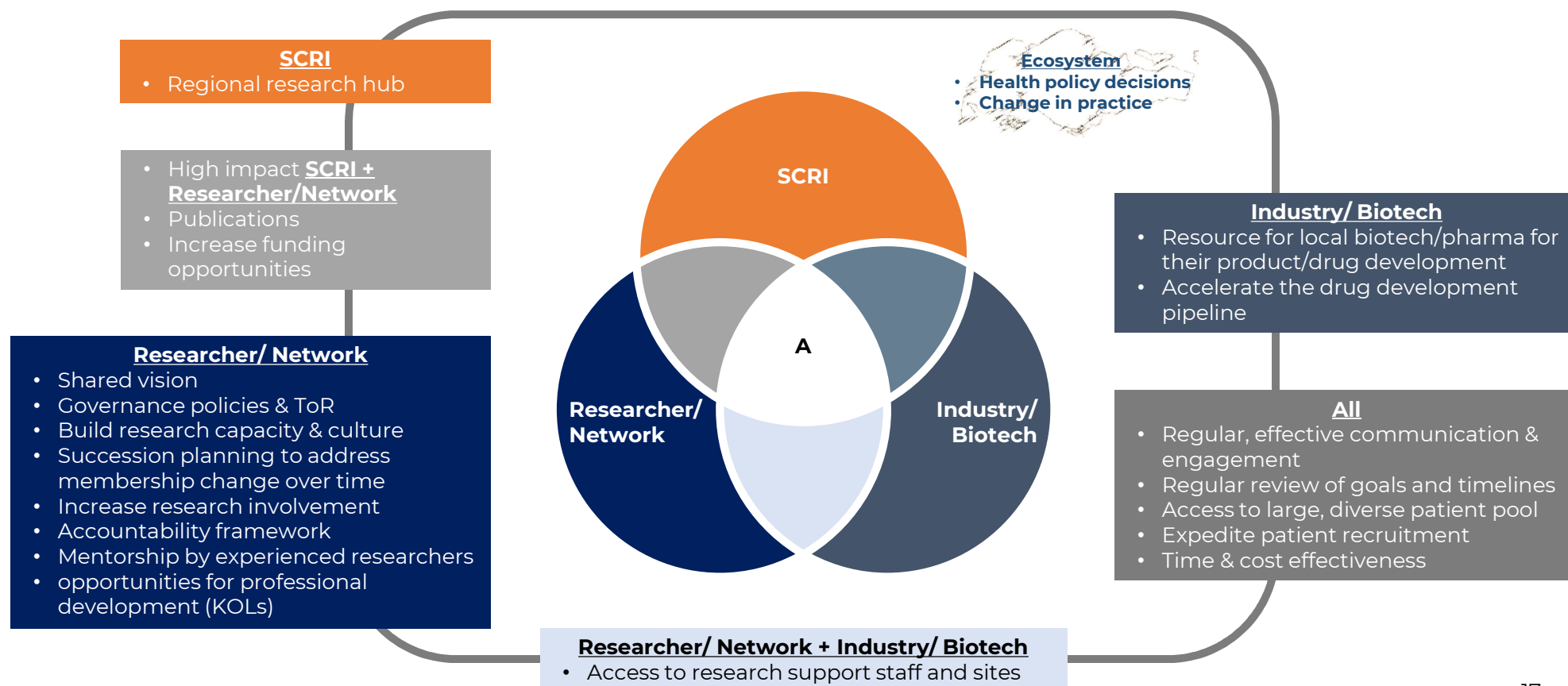
2. Execution

3. Analysis/ Reporting

4. Clinical Research Networks



## 4. CLINICAL RESEARCH NETWORKS: IMPACT & BENEFITS TO ECOSYSTEM



**THANK YOU.**