
NATIONAL HEALTH INNOVATION CENTRE SINGAPORE

An Innovation & Enterprise Office (IEO)
for Public Healthcare Institutions



PART OF THE MINISTRY OF HEALTH FAMILY

MOH HOLDINGS





NATIONAL HEALTH INNOVATION CENTRE

We provide the publicly-funded clinical research sector of Singapore with **translational funding** and **strategic guidance** to accelerate healthcare innovation and commercialisation.

OUR VISION

Singapore as a leading hub for **health innovation & enterprise** in Asia

OUR MISSION

Drive impactful health and economic outcomes for Singapore by **catalyzing** innovation and enterprise endeavours in the healthcare research community through public and industry **partnerships**

OUR VALUE PROPOSITION



FUNDING



MENTORING



PARTNERSHIP

OUR VALUE PROPOSITION



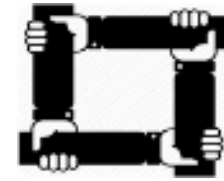
FUNDING

Protect intellectual property (IP), support develop, and move research innovations towards a commercial attractive endpoint



MENTORING

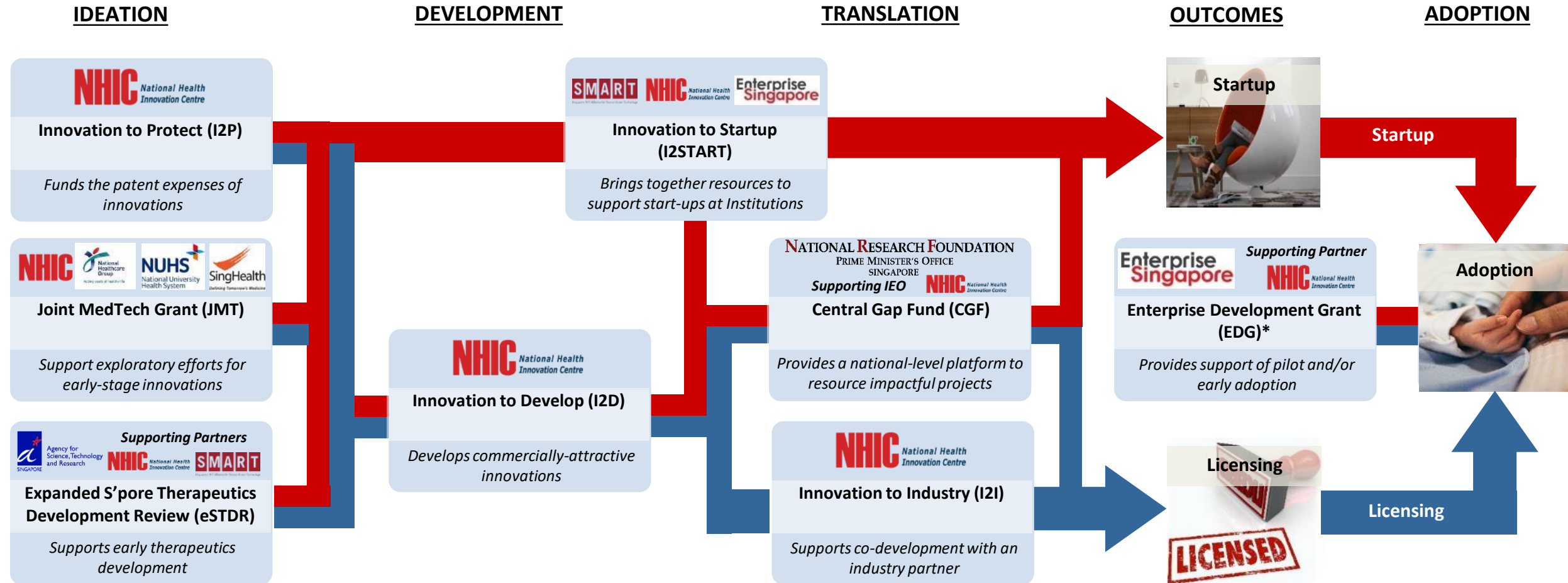
Scout and guide clinicians and research teams on commercialisation strategies, educate and raise awareness on IP commercialisation



PARTNERSHIP

Facilitate partnerships between healthcare institutions and industry, work with policy makers /accreditation boards to facilitate translation into health & socio-economic outcomes

Strategic Pathway to Accelerate Healthcare Innovations



*Pilot scheme by ESG and subject to change

Innovation to Protect (I2P) Patent Support Scheme

Funding patent expenses for inventions.

Eligibility Criteria

- Applicant must be Head / Deputy Director / Director of the healthcare cluster designated office
- Applicant applies on behalf of inventors that hold a primary appointment at:
 - local public hospital or
 - public health institution or
 - national specialty centre

Healthcare Cluster Designated Office

NHG Group Research

NUHS Research Office

SingHealth Office of Intellectual Property (SHIP)

Funding Criteria

- Strong patentability
- Technology development plan
- Commercialisation strategy



Open

Throughout the year



Up to \$40,000

Depending on:

- Stage of patent protection
- Ownership ratio



**12
months**



Submission

via designated office
of healthcare cluster

NHIC does not take ownership of IP, nor recover expenses/take revenue share

Innovation to Develop Grant (I2D)

Funding for development of a healthcare innovation to a commercialisable endpoint.

Eligibility Criteria

Principal Investigator must hold primary appointment in a

- local public hospital or
- public health institution or
- national specialty centre or
- academic medical school

and be salaried by the institution



Funding Criteria

- Healthcare impact
- Commercial potential
- Strong preliminary data
- Technology development plan



3

Grant calls per year
1st Friday of:
Apr, Aug, Dec
(institutional dates may vary)



\$300,000

(inclusive of max.
30% IRC)



12 months

(max. 6 months
extension)



Submission

via designated office
of healthcare cluster

NHIC does not take ownership of IP, nor recover expenses/take revenue share

Innovation to Industry Grant (I2I)

Co-development of healthcare innovation with an industry partner.

Eligibility Criteria

- Successfully completed I2D funded projects (or equivalent as deemed appropriate by NHIC)
- Co-development with an industry partner to license the technology.



Funding Criteria

- Healthcare impact
- Commercial potential
- Clinical feasibility data
- Binding agreement with an industry partner as a licensee



Open

Throughout the year

Application by Invitation only



\$300,000

Awarded to institutions
(inclusive of max. 30% IRC)



12 months

(max. 6 months extension)



Submission

via designated office of healthcare cluster

NHIC does not take ownership of IP, nor recover expenses/take revenue share

National Research Foundation (NRF) Central Gap Fund (Central Gap)

A national-level platform to resource impactful and preferably collaborative projects to translate research outcomes into products, processes and/or services that generate economic and societal benefits for Singapore.

Eligible Entities

Local public hospitals, public health institutions and national specialty centres.

NHIC's Role

- NHIC is the designated Innovation and Enterprise Office (IEO) for public hospitals, public health institutions and national specialty centres.
- All Central Gap applications must be endorsed by NHIC in its capacity as IEO.

Funding Criteria

- Project scope
- Commercialisation potential
- Team composition
- Technical innovation
- Institutional support



Open

Throughout the year
Applications to be
batch processed



>\$250,000



24 months



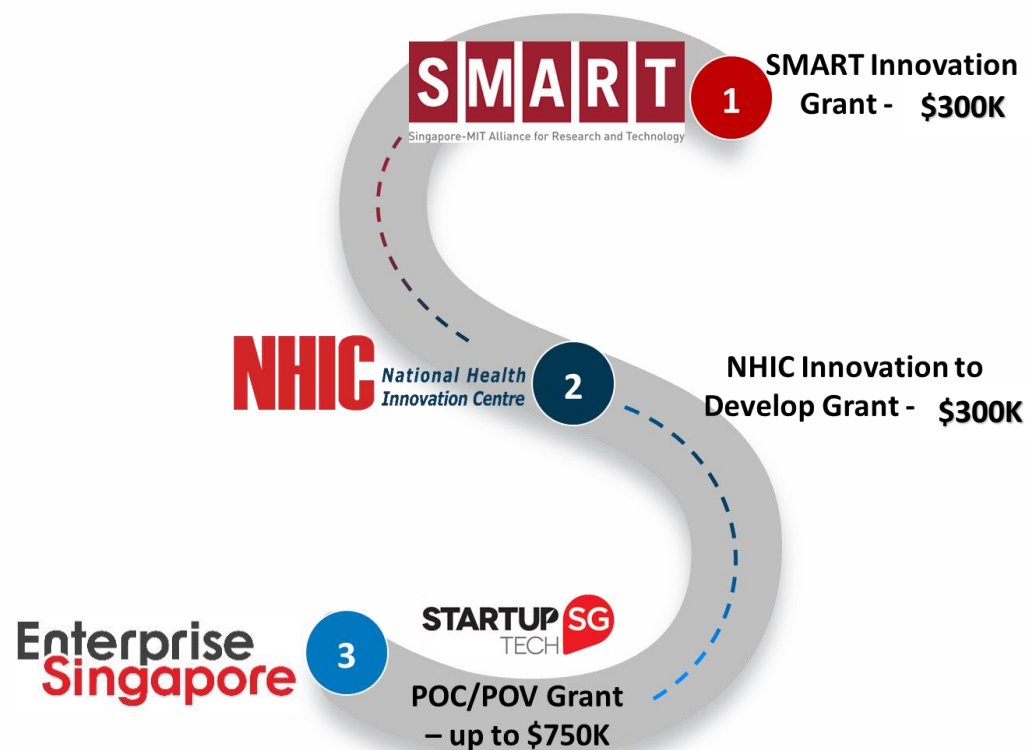
Pre-engagement

with NHIC is required

More info please visit www.nrf.gov.sg/funding-grants/central-gap-fund

Innovation to Startup (I2START)

A premium funding program targeted at HealthTech start-ups from Singapore public institutions.



The tripartite partnership between NHIC, SMART, and Enterprise Singapore strategically bring together funding and resources to support start-ups.

Eligibility Criteria

- Entry: TRL 3* and above
- Health Technologies in the following areas;
 - Clinical diagnostics
 - Medical device and products
 - Digital health
 - Life science tools, etc
- Team with the intent to start-up a company
- Team must consist of one Clinical PI and Technical PI from public institutions

Clinical PI must hold primary appointment in a

- local public hospital or public health institution or national specialty centre or academic medical school and be salaried by the institution



Open Call

Throughout the year



Letter of Intent

Submit LOI to I2Start Grant Secretariat at grant@cris.nhic.sg

TECHNOLOGY AREAS FUNDED



DIAGNOSTICS

Diagnosis performed with the aid of AI based on imaging or sensor reading.

Biomarker based IVDs or CDx for clinical diagnostic and precision medicine applications.

MedTech



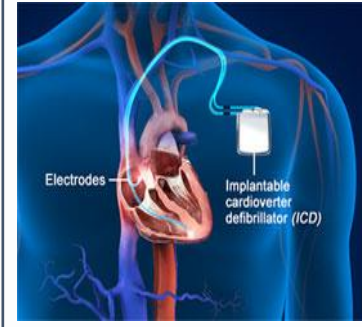
SURGERY TOOL

Use during a procedure, device that are largely mechanical.



HEALTH IT

Apps, VR/AR, Cloud, without a diagnosis.



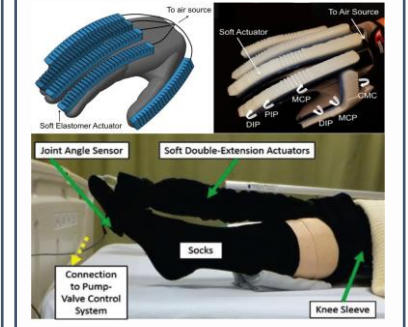
IMPLANT

Implantable devices



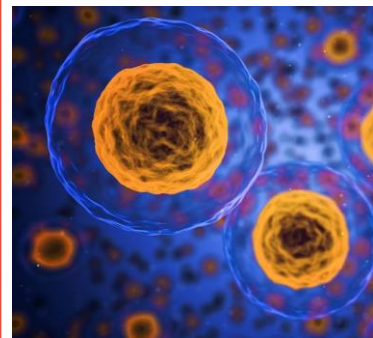
SENSORISED FEEDBACK SYSTEM

Sensor providing close loop feedback to users, semi or fully automated.



THERAPY

Therapeutic Tools



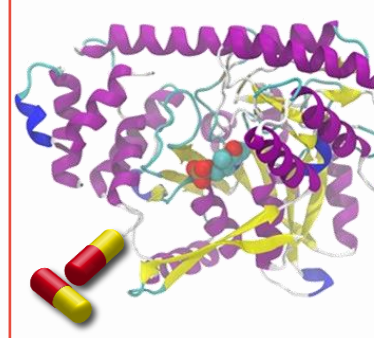
DRUG DELIVERY

Formulations, excipients and adjuvants that improve drug release, distribution and absorption profile.



SMALL MOLECULES

Small molecule drug candidates with specific druggable targets.



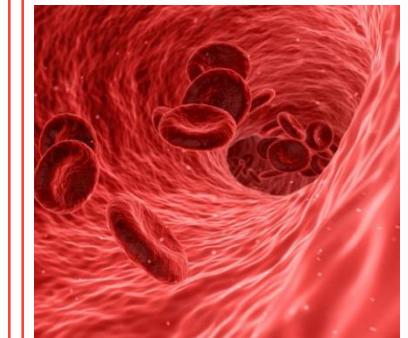
PEPTIDES/PROTEINS

Peptide and protein-based therapeutics targeting specific receptors or biomolecular interactions.



ANTIBODY

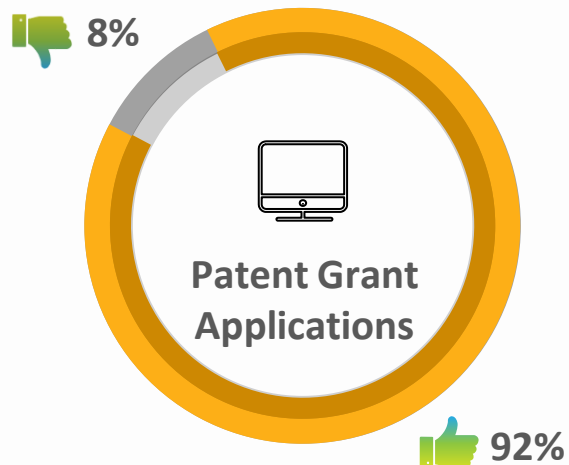
Antibody-based (mABs) therapeutics targeting immune/inflammatory systems or tumour surface antigens.



CELL THERAPY

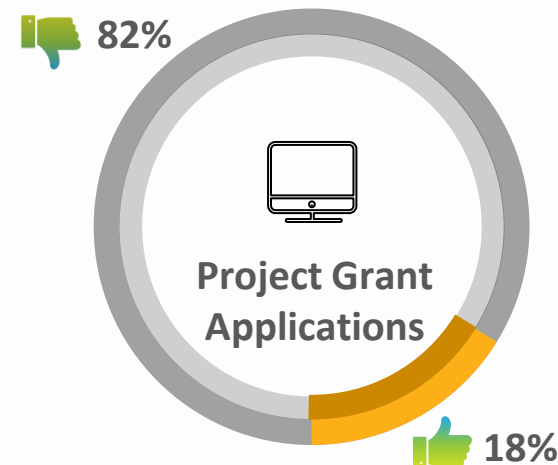
Approaches in autologous and allogeneic stem cell transplants or adoptive cell transplants (CAR-T).

BioPharma and
Stem Cell
Therapy



Innovation to Protect Grant

92% of the I2P applications have successfully obtained approval for funding for patenting expenses.



Innovation to Develop Grant

The success rate for I2D project grant is about 18%. About 65% are in MedTech, and 35% are in BioPharma areas.

Key Performance Indicators

Since the start of operation in June 2014, NHIC has achieved these KPIs through our funding and facilitation of the healthcare clusters in Singapore.

As of 31st March 2021



Licenses
facilitated

46



Licensing
revenues

S\$2.4M



Start-up
companies

15



Innovators
participated

620



Private
investment

S\$22M



Start-up
valuation

S\$74M



Products
launched

6

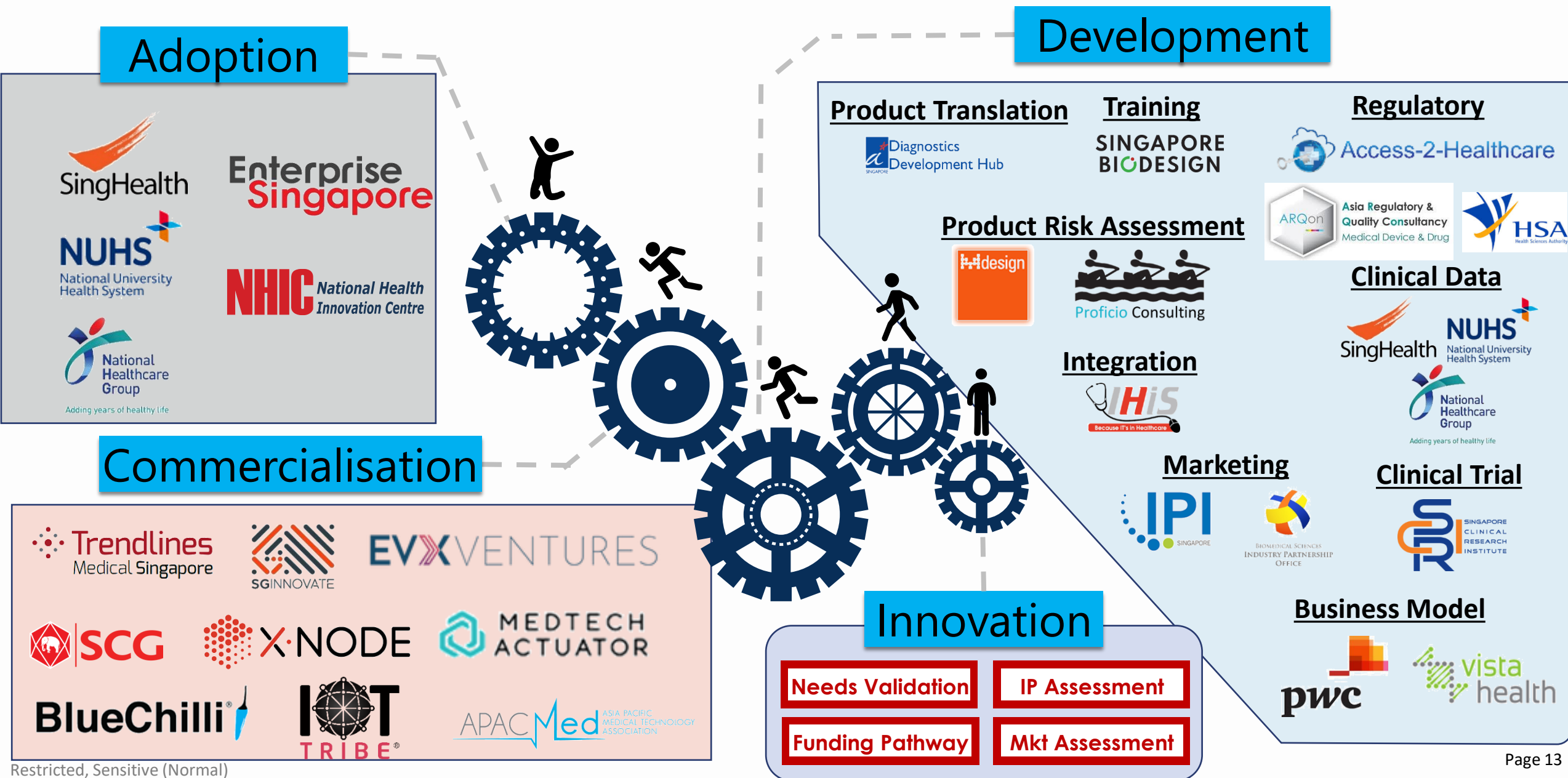


Market
entries

15

NHIC DASHBOARD

Our Value Adds and Support



NHIC supports your Innovation Journey

NHG: Dr Michael Ho
Michael.ho@nhic.cris.sg

Dr Chuah Yon Jin
Yonjin.chuah@nhic.cris.sg

SingHealth: Dr Tan Ee Lim
Eelim.tan@nhic.cris.sg

Dr Chan Shu Ann
Shuann.chan@nhic.cris.sg

NUHS: Dr Yeow Siang Lin
Sianglin.yeow@nhic.cris.sg

For general enquiries, please email **enquiry@nhic.cris.sg**

Thank you

