

---

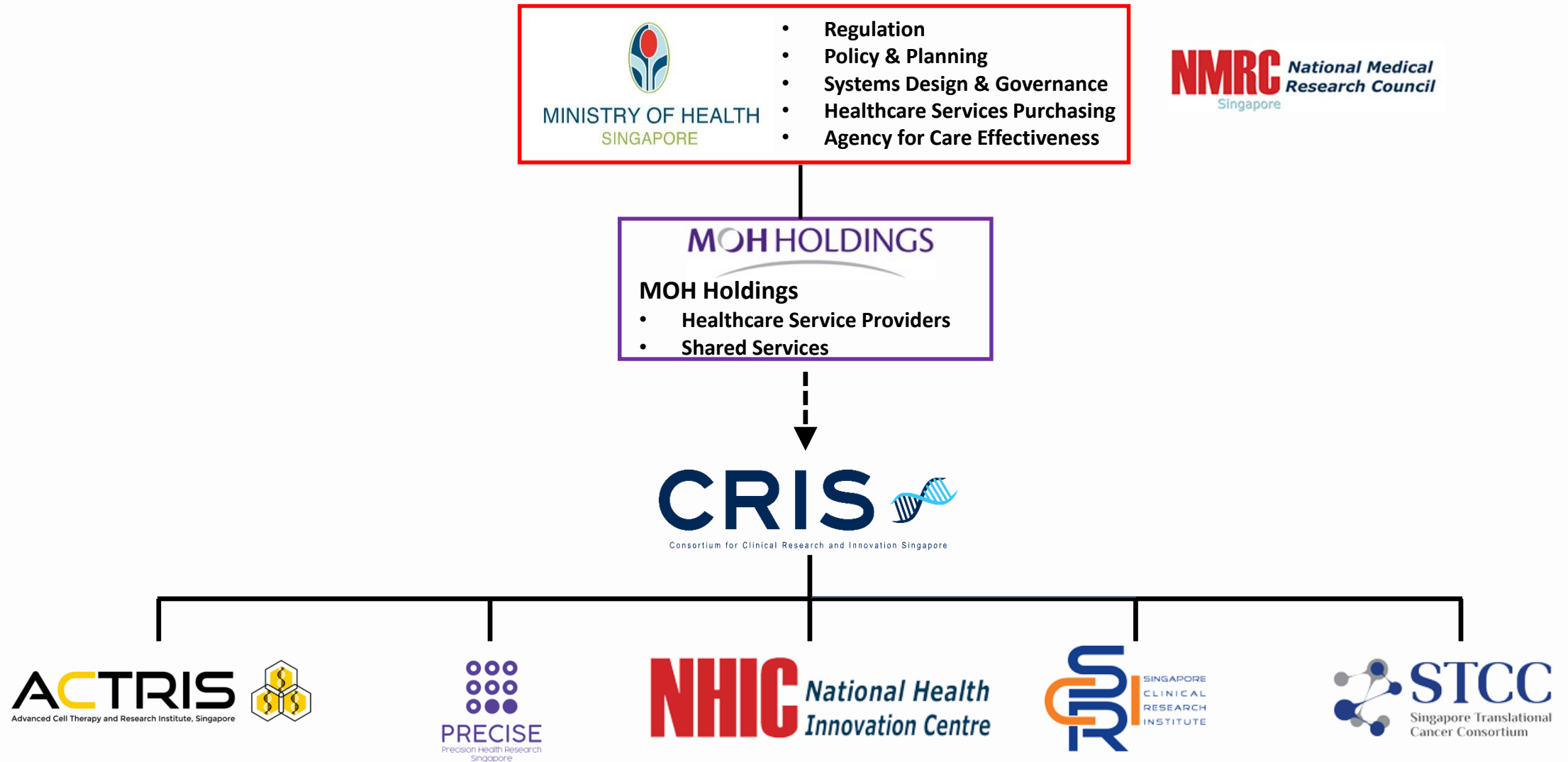
# NATIONAL HEALTH INNOVATION CENTRE SINGAPORE

An Innovation & Enterprise Office (IEO)  
for Public Healthcare Institutions

---



# PART OF THE MINISTRY OF HEALTH FAMILY





# NATIONAL HEALTH INNOVATION CENTRE

We provide the publicly-funded clinical research sector of Singapore with **translational funding** and **strategic guidance** to accelerate healthcare innovation and commercialisation.

## OUR VISION

Singapore as a leading hub for **health innovation & enterprise** in Asia

## OUR MISSION

**Drive** impactful health and economic outcomes for Singapore by **catalyzing** innovation and enterprise endeavours in the healthcare research community through public and industry **partnerships**

## OUR VALUE PROPOSITION



FUNDING



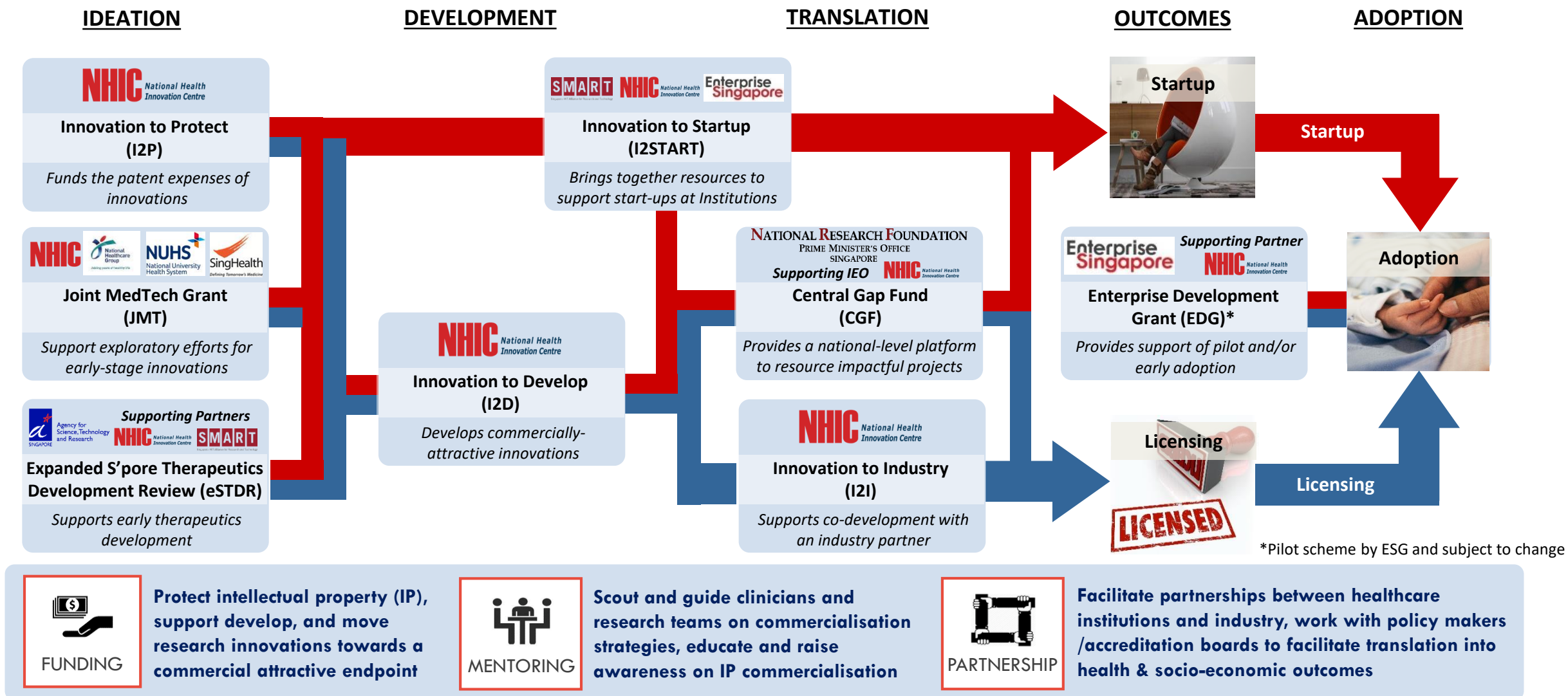
MENTORING



PARTNERSHIP



# Strategic Pathway to Accelerate Healthcare Innovations



# Innovation to Protect Grant (I2P)

## Funding patent expenses for inventions.

### Eligibility Criteria

- Applicant must be Head / Deputy Director / Director of the healthcare cluster designated office
- Applicant applies on behalf of inventors that hold a primary appointment at:
  - local public hospital or
  - public health institution or
  - national specialty centre

### Healthcare Cluster Designated Office

NHG Centre for Medical Technologies & Innovations (CMTi)

NUHS Research Office

SingHealth Office of Intellectual Property (SHIP)

### Funding Criteria

- Strong patentability
- Technology development plan
- Commercialisation strategy



### Open

Throughout the year



### Up to \$40,000

Depending on:

- Stage of patent protection
- Ownership ratio



### 6 – 12 months

Depending on stage of patent protection



### Submission

via designated office of healthcare cluster

NHIC does not take ownership of IP, nor recover expenses/take revenue share

# Innovation to Develop Grant (I2D)

**Funding for development of a healthcare innovation to a commercialisable endpoint.**

## Eligibility Criteria

Principal Investigator must hold primary appointment in a

- local public hospital or
- public health institution or
- national specialty centre or
- academic medical school

and be salaried by the institution



## Funding Criteria

- Healthcare impact
- Commercial potential
- Strong preliminary data
- Technology development plan



**3**

Grant calls per year  
1<sup>st</sup> Friday of:  
**Apr, Aug, Dec**  
(institutional dates may vary)



**\$250,000**

(inclusive of max.  
20% IRC)



**12 months**

(max. 6 months  
extension)



**Submission**

via designated office  
of healthcare cluster

NHIC does not take ownership of IP, nor recover expenses/take revenue share

# Innovation to Industry Grant (I2I)

**Co-development of healthcare innovation with an industry partner.**

## Eligibility Criteria

- Successfully completed I2D funded projects (or equivalent as deemed appropriate by NHIC)
- Co-development with an industry partner to license the technology.



## Funding Criteria

- Healthcare impact
- Commercial potential
- Clinical feasibility data
- Binding agreement with an industry partner as a licensee



**Open**

Throughout the year

**Application by Invitation only**



**\$250,000**

**Awarded to institutions**  
(inclusive of max.  
20% IRC)



**12 months**

(max. 6 months  
extension)



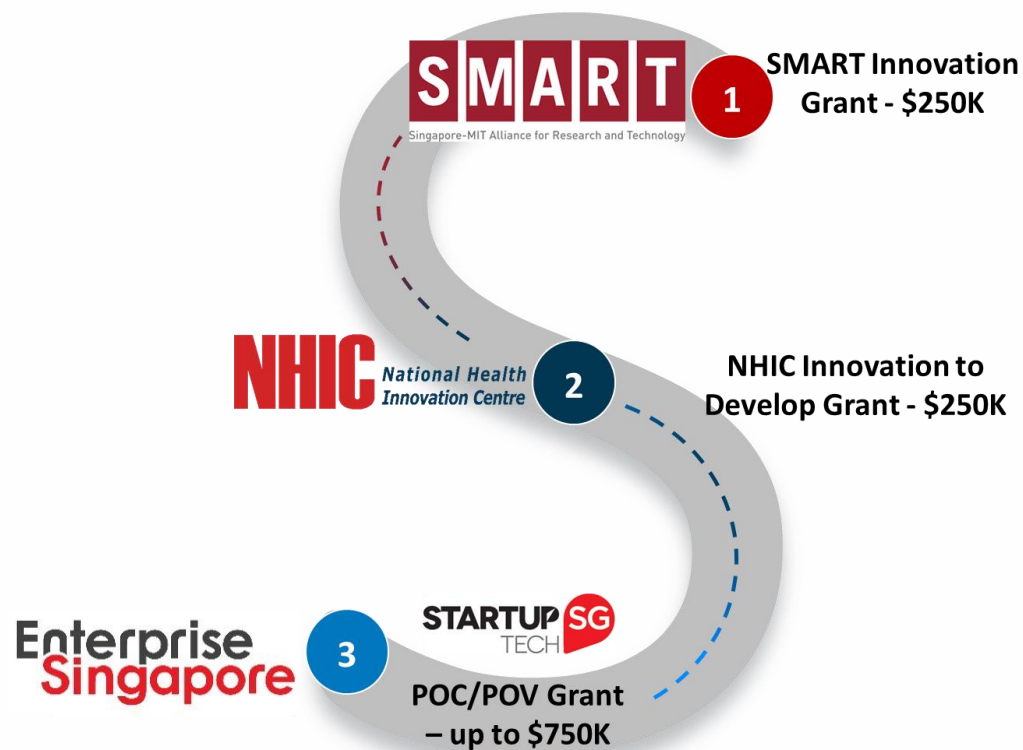
**Submission**

via designated office  
of healthcare cluster

NHIC does not take ownership of IP, nor recover expenses/take revenue share

# Innovation to Startup (I2START)

A premium funding program targeted at HealthTech start-ups from Singapore public institutions.



The tripartite partnership between NHIC, SMART, and Enterprise Singapore strategically bring together funding and resources to support start-ups.

## Eligibility Criteria

- Entry: TRL 3\* and above
- Health Technologies in the following areas;
  - Clinical diagnostics
  - Medical device and products
  - Digital health
  - Life science tools, etc
- Team with the intent to start-up a company
- Team must consist of one Clinical PI and Technical PI from public institutions

**Clinical PI** must hold primary appointment in a

- local public hospital or public health institution or national specialty centre or academic medical school and be salaried by the institution



## Open Call

Throughout the year



## Letter of Intent

Submit LOI to I2Start Grant Secretariat at [grant@cris.nhic.sg](mailto:grant@cris.nhic.sg)



# National Research Foundation (NRF) Central Gap Fund (Central Gap)

**A national-level platform to resource impactful and preferably collaborative projects to translate research outcomes into products, processes and/or services that generate economic and societal benefits for Singapore.**

## Eligible Entities

Local public hospitals, public health institutions and national specialty centres.

## NHIC's Role

- NHIC is the designated Innovation and Enterprise Office (IEO) for public hospitals, public health institutions and national specialty centres.
- All Central Gap applications must be endorsed by NHIC in its capacity as IEO.

## Funding Criteria

- Project scope
- Commercialisation potential
- Team composition
- Technical innovation
- Institutional support



**Open**

Throughout the year  
Applications to be  
batch processed



**>\$250,000**



**24 months**



**Pre-engagement**

**with NHIC is required**

More info please visit [www.nrf.gov.sg/funding-grants/central-gap-fund](http://www.nrf.gov.sg/funding-grants/central-gap-fund)

# TECHNOLOGY AREAS FUNDED



## DIAGNOSTICS

Diagnosis performed with the aid of AI based on imaging or sensor reading.

Biomarker based IVDs or CDx for clinical diagnostic and precision medicine applications.

MedTech

BioPharma and  
Stem Cell  
Therapy



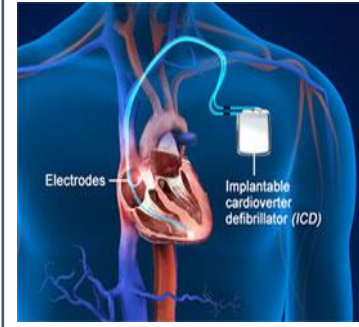
## SURGERY TOOL

Use during a procedure, device that are largely mechanical.



## HEALTH IT

Apps, VR/AR, Cloud, without a diagnosis.



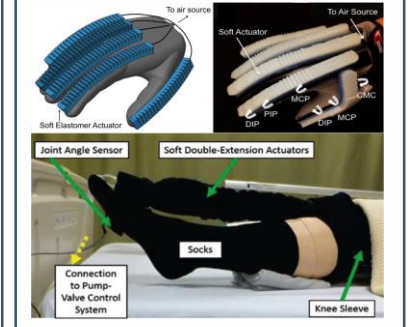
## IMPLANT

Implantable devices



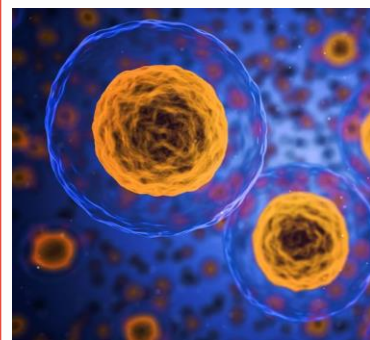
## SENSORISED FEEDBACK SYSTEM

Sensor providing close loop feedback to users, semi or fully automated.



## THERAPY

Therapeutic Tools



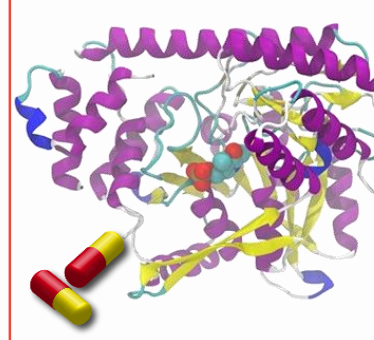
## DRUG DELIVERY

Formulations, excipients and adjuvants that improve drug release, distribution and absorption profile.



## SMALL MOLECULES

Small molecule drug candidates with specific druggable targets.



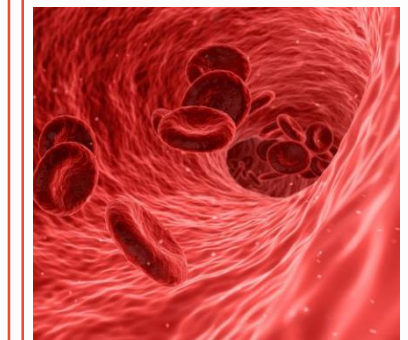
## PEPTIDES/PROTEINS

Peptide and protein-based therapeutics targeting specific receptors or biomolecular interactions.



## ANTIBODY

Antibody-based (mABs) therapeutics targeting immune/inflammatory systems or tumour surface antigens.



## CELL THERAPY

Approaches in autologous and allogeneic stem cell transplants or adoptive cell transplants (CAR-T).

## NHIC supports your Innovation Journey

**NHG:** [Dr Michael Ho](mailto:Michael.ho@nhic.cris.sg)  
[Michael.ho@nhic.cris.sg](mailto:Michael.ho@nhic.cris.sg)

[Dr Chuah Yon Jin](mailto:Yonjin.chuah@nhic.cris.sg)  
[Yonjin.chuah@nhic.cris.sg](mailto:Yonjin.chuah@nhic.cris.sg)

**SingHealth:** [Dr Tan Ee Lim](mailto:Eelim.tan@nhic.cris.sg)  
[Eelim.tan@nhic.cris.sg](mailto:Eelim.tan@nhic.cris.sg)

[Dr Chan Shu Ann](mailto:Shuann.chan@nhic.cris.sg)  
[Shuann.chan@nhic.cris.sg](mailto:Shuann.chan@nhic.cris.sg)

**NUHS:** [Dr Yeow Siang Lin](mailto:Sianglin.yeow@nhic.cris.sg)  
[Sianglin.yeow@nhic.cris.sg](mailto:Sianglin.yeow@nhic.cris.sg)

For general enquiries, please email [enquiry@nhic.cris.sg](mailto:enquiry@nhic.cris.sg)

Thank you

