



SCRI Overview

Dr Gerard Wong
DIRECTOR, MEDICAL AFFAIRS

Singapore Clinical Research Institute (SCRI)



SCRI Overview

Dr Gao Hong

HEAD, PROJECT MANAGEMENT

HEAD, PHARMACOVIGILANCE

HEAD, ACADEMY

Singapore Clinical Research Institute (SCRI)

About SCRI

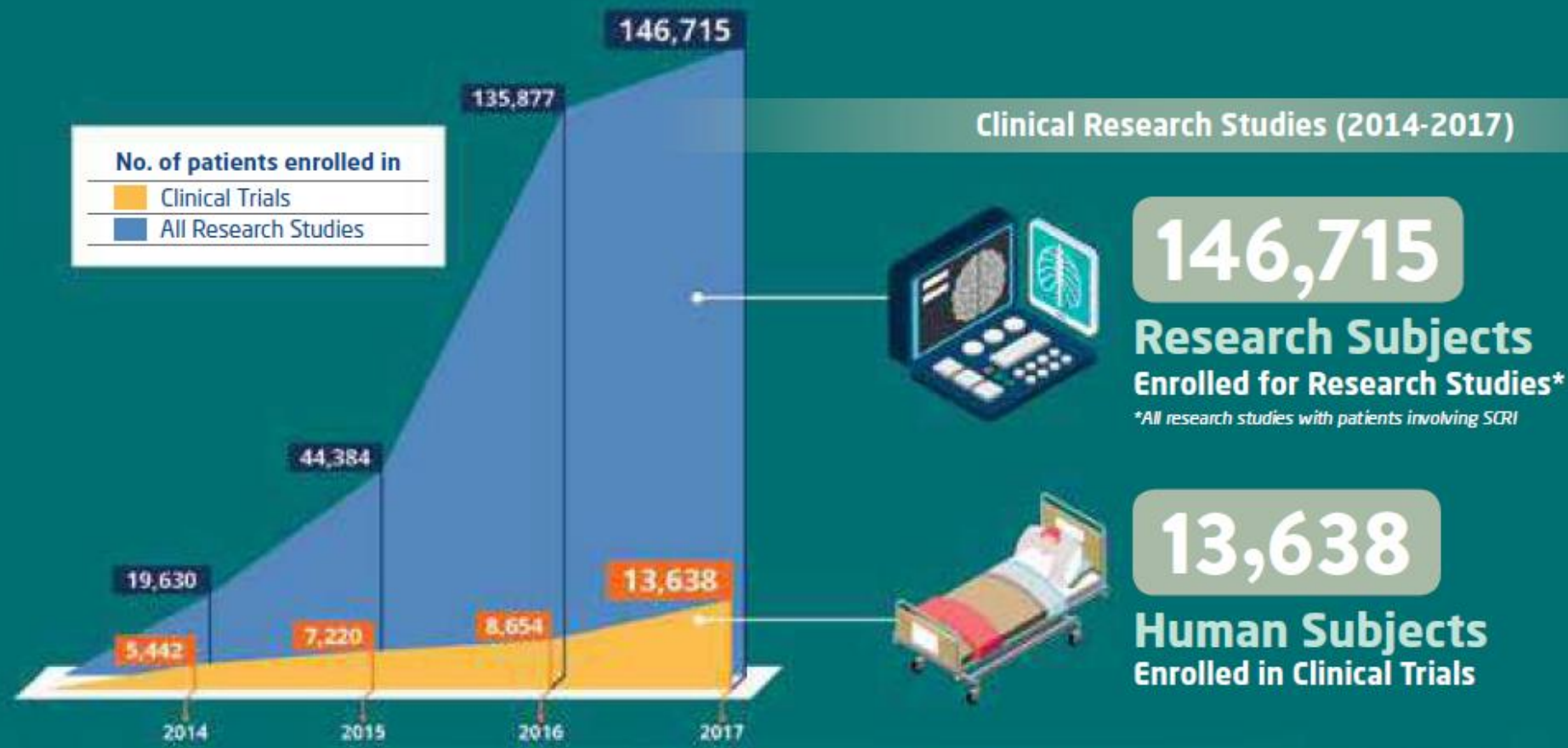


As the national academic clinical research organisation, SCRI is dedicated to enhancing the standards of clinical research capabilities in Singapore. SCRI leads in scientific collaboration and research innovation to search with our healthcare partners for better treatment outcomes for patients. Together, the nation is set to develop core capabilities and thought leadership for clinical research excellence.

CORE VALUES	
SCIENTIFIC	We believe in clinical research in accordance to the scientific method
COLLABORATIVE	We believe in collaborating closely with partners in clinical research
RELIABLE	We believe in providing reliable support for our clinical research work
INNOVATIVE	We believe in being innovative in clinical research work



KEY FACTS AND FIGURES



Scientific and Operational Team in 2017

A diversified team of

56

Scientific and Operational Staff





Supported
359 Local and
International Sites
Across **25** Countries

Worked with
1,048
Investigators



Research Findings
Published in **271**
Publications



Conducted
178
Studies



Conducted and Participated in
225 Workshops,
Seminars & Conferences



GEOGRAPHICAL COVERAGE

SCRI has a far-reaching local and international presence



SINGAPORE

- | | | |
|--|---|--|
| 1 Changi General Hospital | 9 National Dental Centre of Singapore | 17 National University of Singapore, Yong Loo Lin School of Medicine |
| 2 Duke-NUS Medical School | 10 National Heart Centre Singapore | 18 Ng Teng Fong General Hospital |
| 3 Institute of Mental Health | 11 National Neuroscience Institute | 19 Sengkang Health, Alexandra Hospital |
| 4 John Hopkins Singapore Internal Medicine Centre* | 12 National Skin Centre | 20 Singapore General Hospital |
| 5 Jurong Medical Centre | 13 National University Cancer Institute, Singapore | 21 Singapore National Eye Centre |
| 6 Khoo Teck Puat Hospital | 14 National University Heart Centre, Singapore | 22 SingHealth Investigational Medicine Unit |
| 7 KK Women's and Children's Hospital | 15 National University Hospital | 23 St. Luke's Hospital |
| 8 National Cancer Centre Singapore | 16 National University of Singapore, Faculty of Dentistry | 24 Tan Tock Seng Hospital |

THERAPEUTIC AREAS

These numbers reflect both ongoing and completed studies since 2008



Source:

1. MOH Holdings "Admissions and Outpatient Attendances." moh.gov.sg. 21 April 2017. Web.
2. Channel NewsAsia "National Day Rally: 1 In 9 Singaporeans has diabetes' problem 'very serious,' says PM Lee." channelnewsasia.com. 20 August 2017. Web.
3. SingHealth "Stroke in Singapore." singhealth.com.sg. Web.
4. Department of Statistics Singapore "Births and Fertility." singstat.gov.sg. 9 May 2018. Web.
5. Straits Times "Myopia rate here stable amid rising levels worldwide." straitstimes.com. 16 August 2017. Web.
6. Institute of Mental Health "Anxiety in Singapore: Stats, Types and Who's at Risk." imh.com.sg. Web.
7. The New Paper "1,000 cases of sudden cardiac death in Singapore each year - that's equivalent to three cases a day." np.sg. 19 June 2017. Web.
8. Straits Times "Dengue cases at 16-year low." straitstimes.com. 20 December 2017. Web.
9. MOH Holdings "Principal Causes of Death." moh.gov.sg. 16 August 2017. Web.

EMERGENCY MEDICINE

2016 saw more than 1 million emergency attendances in Singapore's public hospitals¹

ENDOCRINOLOGY

Diabetes is one of the fastest growing chronic diseases in Singapore. Today, one in nine Singaporeans has diabetes²

NEUROLOGY

One in 10 stroke patients in Singapore is under age 50. Stroke is the largest cause of long-term physical disability in Singapore³

PAEDIATRICS

More than 39,000 Singaporean babies were born in 2017⁴

OPHTHALMOLOGY

Eye diseases are common among our population, one of which is childhood myopia which afflicts two thirds of Primary Six pupils in Singapore⁵

PSYCHIATRY

The Singapore Mental Health Study 2010 found that about one in 10 people in Singapore suffer from a mental disorder⁶

CARDIOLOGY

Every year, 1,000 cases of sudden cardiac death in Singapore⁷

INFECTIOUS DISEASE

We remain vulnerable to infectious diseases like dengue with more than 2,000 cases reported in 2017⁸

ONCOLOGY

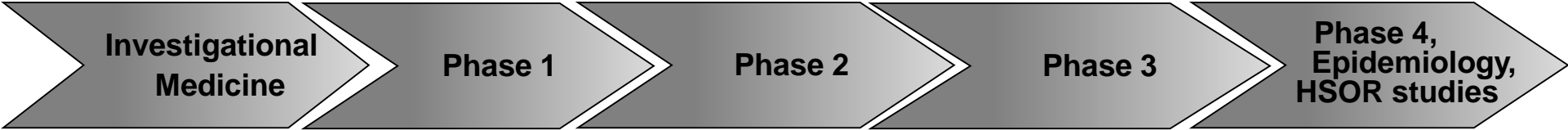
Cancer is the number one cause of death in Singapore⁹, and research into cancer prevention and treatment is a national priority

OTHERS

Anaesthesiology, Dietetics, Gastroenterology, Gynaecology, Haematology, Head and Neck, Medical Device, Musculoskeletal, Neonatology, Nephrology, Nutrition, Orthopaedics, Psychology, Quality of Life, Respiratory, Rheumatology, Statistical, Surgery, Vascular

Clinical Research Infrastructure in Singapore


IMUs & SCRI



Investigational Medicine Unit
At Kent Ridge Campus

Investigational Medicine Unit
At SGH Campus

Singapore Clinical Research Institute (SCRI)



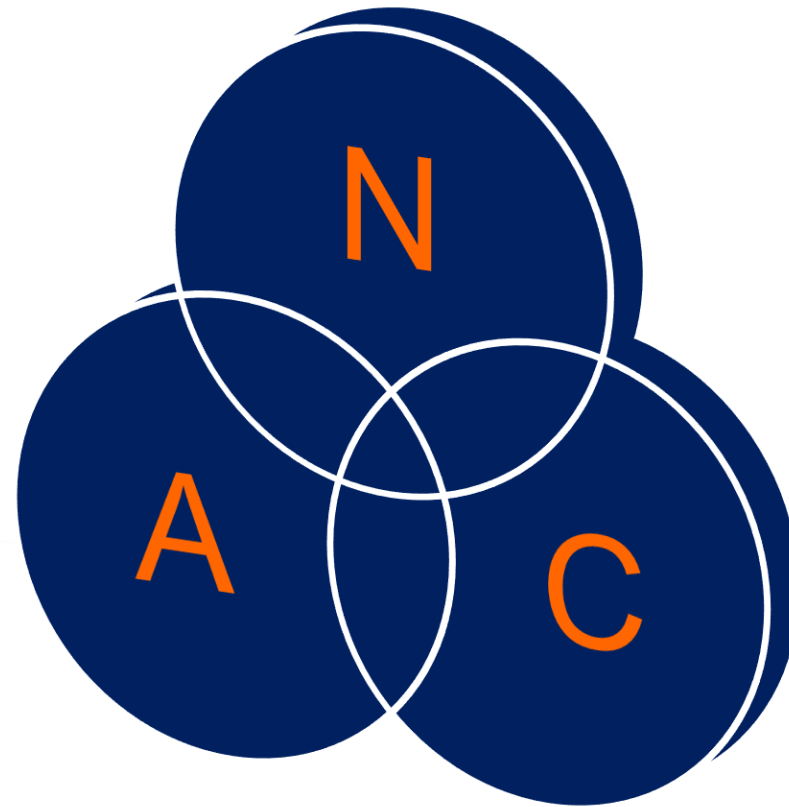
- *National, one-stop centre for private/public investigators to conduct late-phase clinical research in Singapore*
- *Services provided: study design, project & data management, biostatistics, study reporting on a fee-for-service basis*
- *Develops specialised training courses*
- *Conducts in-house research*

Roles and Responsibilities of SCRI

Our 3 Mission Domains



Academic

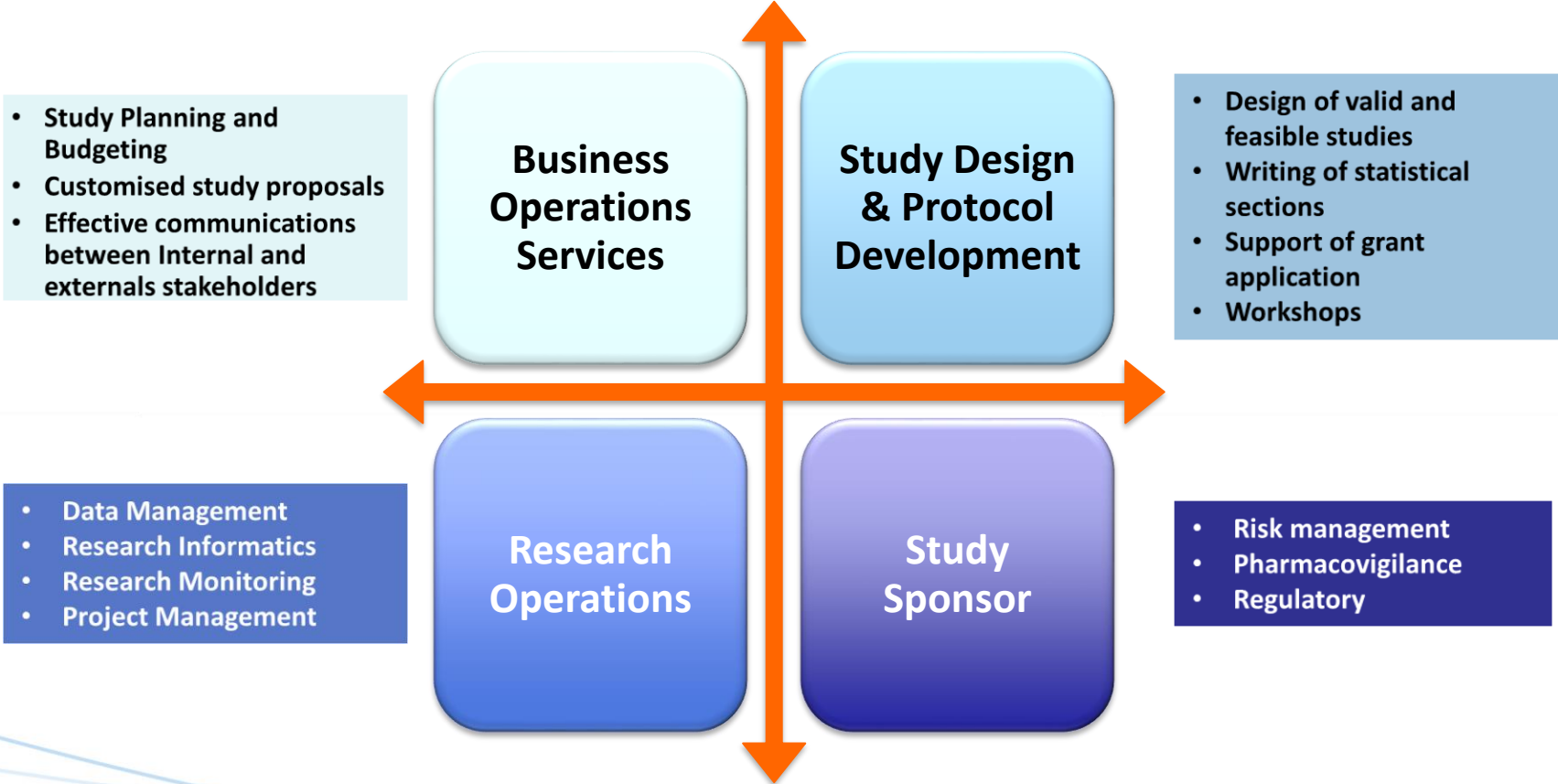


National Clinical Trials Strategy
and Coordination

Commercial

Note: Many specific tasks may fall into more than one of these 3 domains
(e.g. The CT Network role is on a **N**ational scale but helps build-up **A**cademic KOLs & attract **C**ommercial trials.)

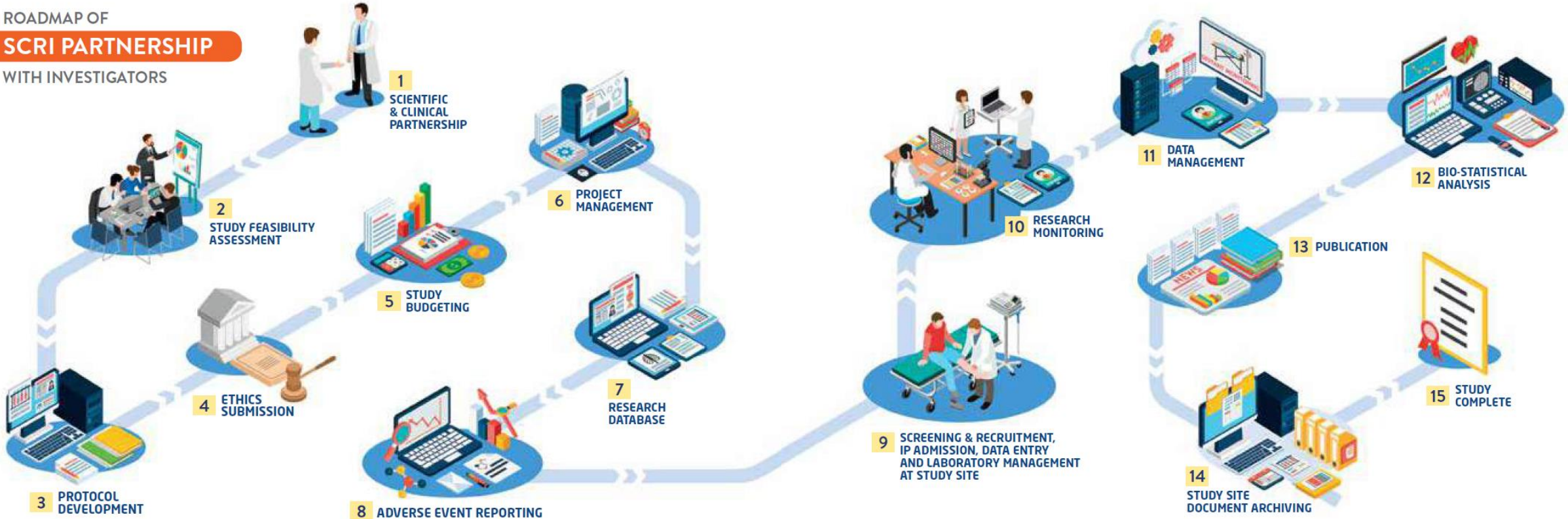
Academic Research Organisation



SCRI Partnership Roadmap



ROADMAP OF SCRI PARTNERSHIP WITH INVESTIGATORS



Pre & Post Project Activities

- Study Design, Analysis and Reporting
- Evidence Synthesis
- Health Outcome Research
- Study Planning & Budgeting



Research Operations

- Project Management
- Research Informatics
- Randomisation
- Research Monitoring
- Data Management
- Pharmacovigilance
- Quality Assurance

What SCRI can help if a PI plans to apply for an NMRC Grant?



- Contact SCRI to ask for pre-grant support
 - Scientific and operational review on grant proposal
 - Sample size calculation
 - Scope operations budget (project management, monitoring, data management, data analysis)
 - This support is provided free to PIs
- If PI is successful in obtaining the study grant, SCRI can provide post-grant support:
 - Some of the logistics operations (e.g. project management, study monitoring, data management) at subsidised fee
 - Help PI to look for external outsourced vendor
- When study completed, SCRI Biostatistician can help with the publication



Contact Us:

Singapore Clinical Research Institute Pte Ltd
31 Biopolis Way, Nanos, #02-01 Singapore 138669

contact@scri.edu.sg

www.scri.edu.sg

Follow us on Facebook @SingaporeClinicalResearchInstitute



Thank You