



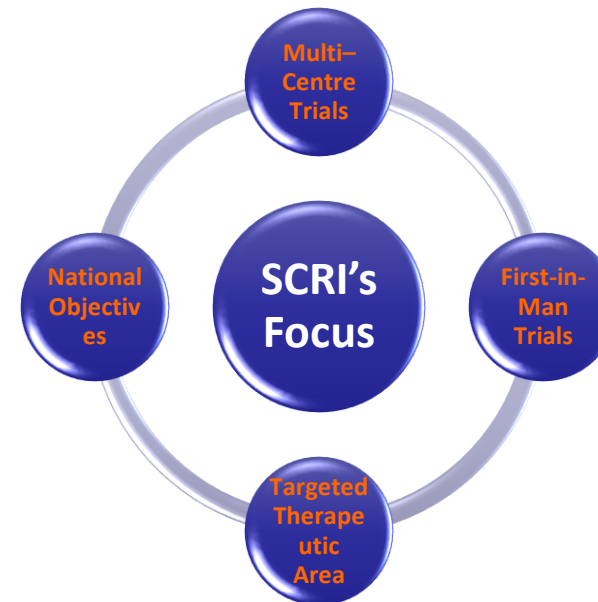
SCRI OVERVIEW

Dr Gao Hong
Head, Project Management & Pharmacovigilance
Singapore Clinical Research Institute (SCRI)

About SCRI

As the national academic clinical research organisation, SCRI is dedicated to enhancing the standards of clinical research capabilities in Singapore. SCRI leads in scientific collaboration and research innovation to search with our healthcare partners for better treatment outcomes for patients. Together, the nation is set to develop core capabilities and thought leadership for clinical research excellence.

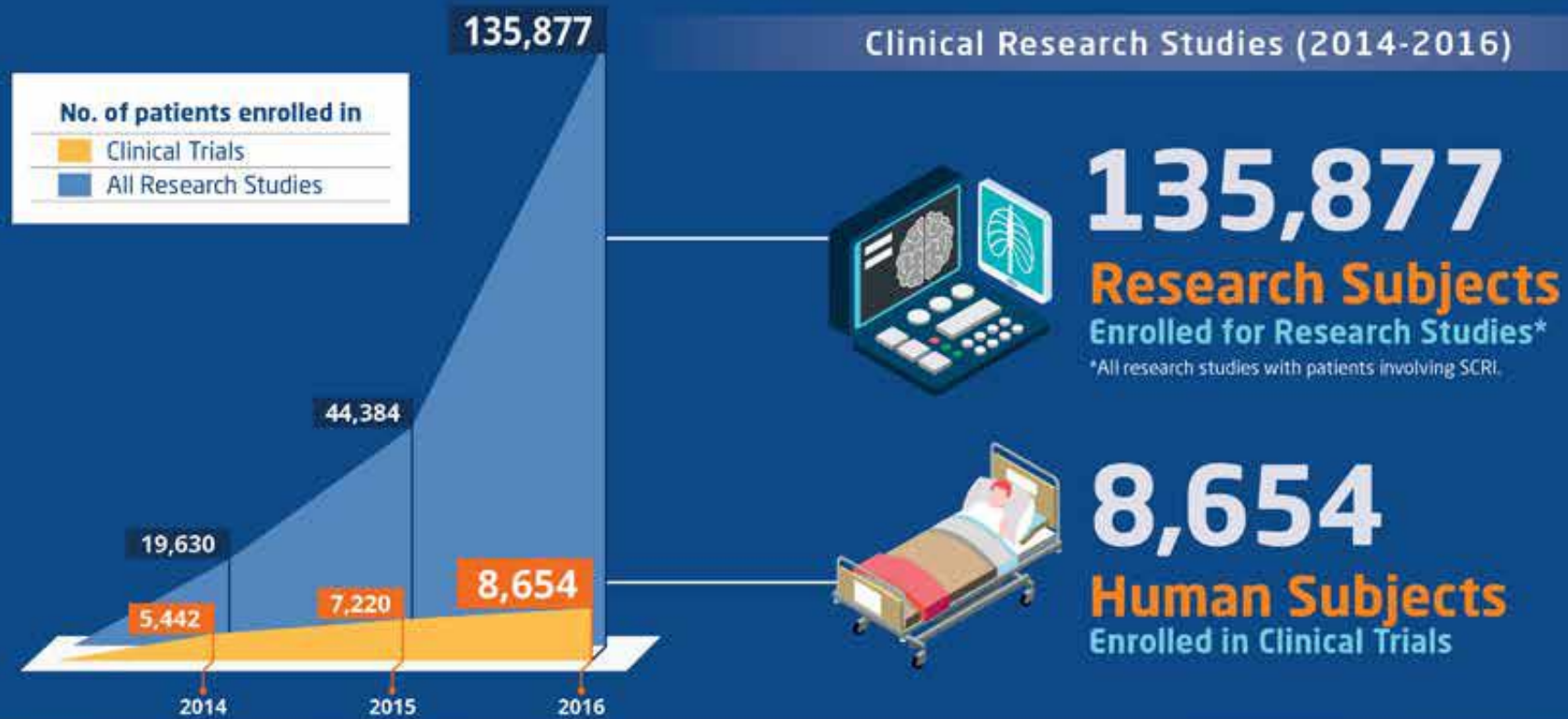
CORE VALUES	
SCIENTIFIC	We believe in clinical research in accordance to the scientific method
COLLABORATIVE	We believe in collaborating closely with partners in clinical research
RELIABLE	We believe in providing reliable support for our clinical research work
INNOVATIVE	We believe in being innovative in clinical research work



INNOVATION IN CLINICAL RESEARCH FOR THE NATION



KEY FACTS AND FIGURES



Scientific and Operational Team in 2016

A diversified team of

57

Scientific and
Operational Staff





Worked with

736
Investigators

Supported

216
Local and
International Sites
Across **25** Countries



Research Findings

Published in

246
Publications

Conducted and
Participated in
186

Workshops,
Seminars &
Conferences



Conducted

137
Studies





GEOGRAPHICAL COVERAGE

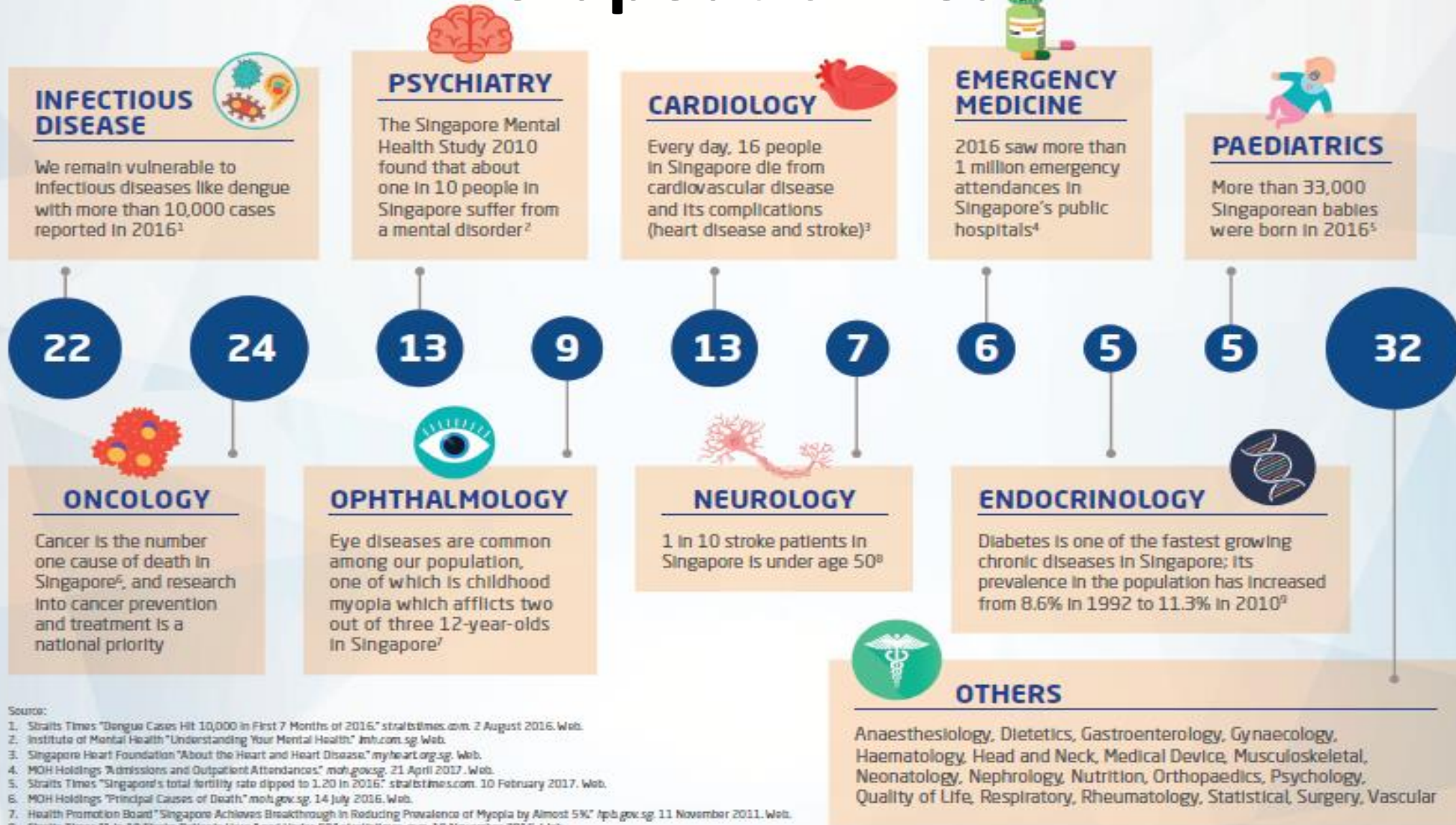
SCRI has a far-reaching local and international presence



SINGAPORE

- | | | |
|---|---|---|
| 1 Changi General Hospital | 9 National Dental Care Singapore | 17 National University of Singapore, Yong Loo Lin, School of Medicine |
| 2 Duke-NUS Medical School, Singapore | 10 National Heart Centre Singapore | 18 Ng Teng Fong General Hospital |
| 3 Institute of Mental Health | 11 National Neurological Institute | 19 Sengkang Health, Alexandra Hospital |
| 4 John Hopkins Singapore Internal Medicine Centre | 12 National Skin Centre | 20 Singapore General Hospital |
| 5 Jurong Medical Centre | 13 National University Cancer Institute, Singapore | 21 Singapore National Eye Centre |
| 6 Khoo Teck Puat Hospital | 14 National University Heart Centre, Singapore | 22 SingHealth Investigational Medicine Unit |
| 7 KK Women's and Children's Hospital | 15 National University Hospital | 23 St. Luke's Hospital |
| 8 National Cancer Centre Singapore | 16 National University of Singapore, Faculty of Dentistry | 24 Tan Tock Seng Hospital |

Therapeutic Areas

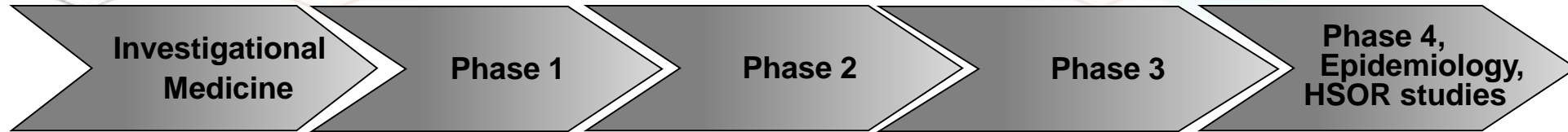


Source:

1. Straits Times "Dengue Cases Hit 10,000 in First 7 Months of 2016." straitstimes.com. 2 August 2016. Web.
2. Institute of Mental Health "Understanding Your Mental Health." imh.com.sg. Web.
3. Singapore Heart Foundation "About the Heart and Heart Disease." myheart.org.sg. Web.
4. MOH Holdings "Admissions and Outpatient Attendances." moh.gov.sg. 21 April 2017. Web.
5. Straits Times "Singapore's total fertility rate dipped to 1.20 in 2016." straitstimes.com. 10 February 2017. Web.
6. MOH Holdings "Principal Causes of Death." moh.gov.sg. 14 July 2016. Web.
7. Health Promotion Board "Singapore Achieves Breakthrough in Reducing Prevalence of Myopia by Almost 5%." hpb.gov.sg. 11 November 2011. Web.
8. Straits Times "1 in 10 Stroke Patients Here Aged Under 50." straitstimes.com. 19 November 2016. Web.
9. Saw Swee Hock School of Public Health, National University of Singapore "Rising Obesity Among Young Set to Worsen Diabetes Rate in Singapore." sph.nus.edu.sg. 22 February 2016. Web.

Clinical Research Infrastructure In Singapore

IMUs & SCRI



Investigational Medicine Unit
At Kent Ridge Campus

Investigational Medicine Unit
At SGH Campus

Singapore Clinical
Research Institute
(SCRI)



- *National, one-stop center for private/public investigators to conduct late-phase clinical research in Singapore*
- *Services provided: study design, project & data management, biostatistics, study reporting on a fee-for-service basis*
- *Develops specialised training courses*
- *Conducts in-house research*

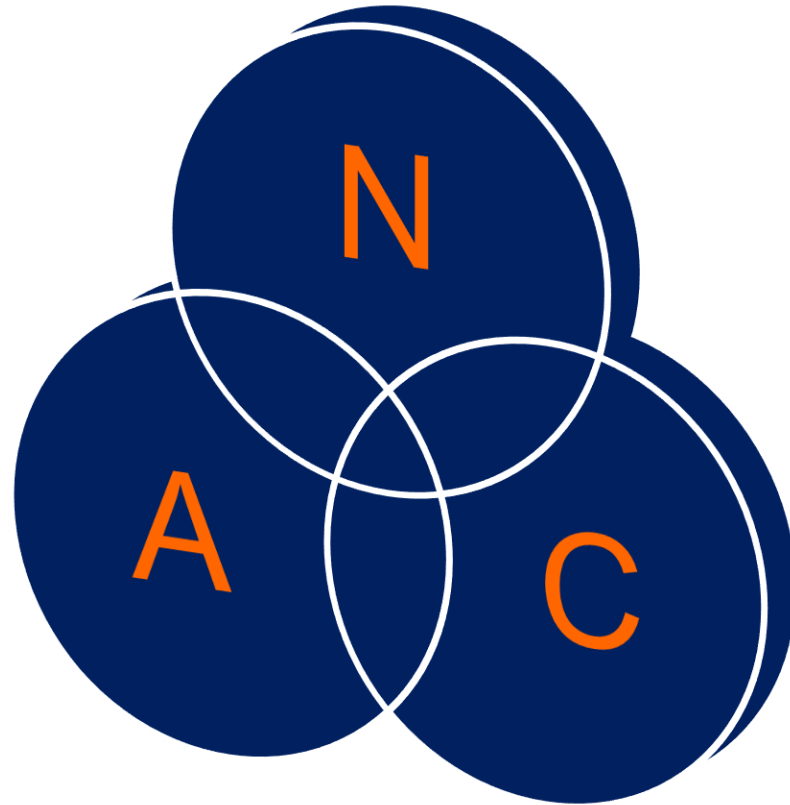
INNOVATION IN CLINICAL RESEARCH FOR THE NATION



Roles and Responsibilities of SCRI

– our 3 Mission Domains

Academic



National Clinical Trials Strategy and
Coordination

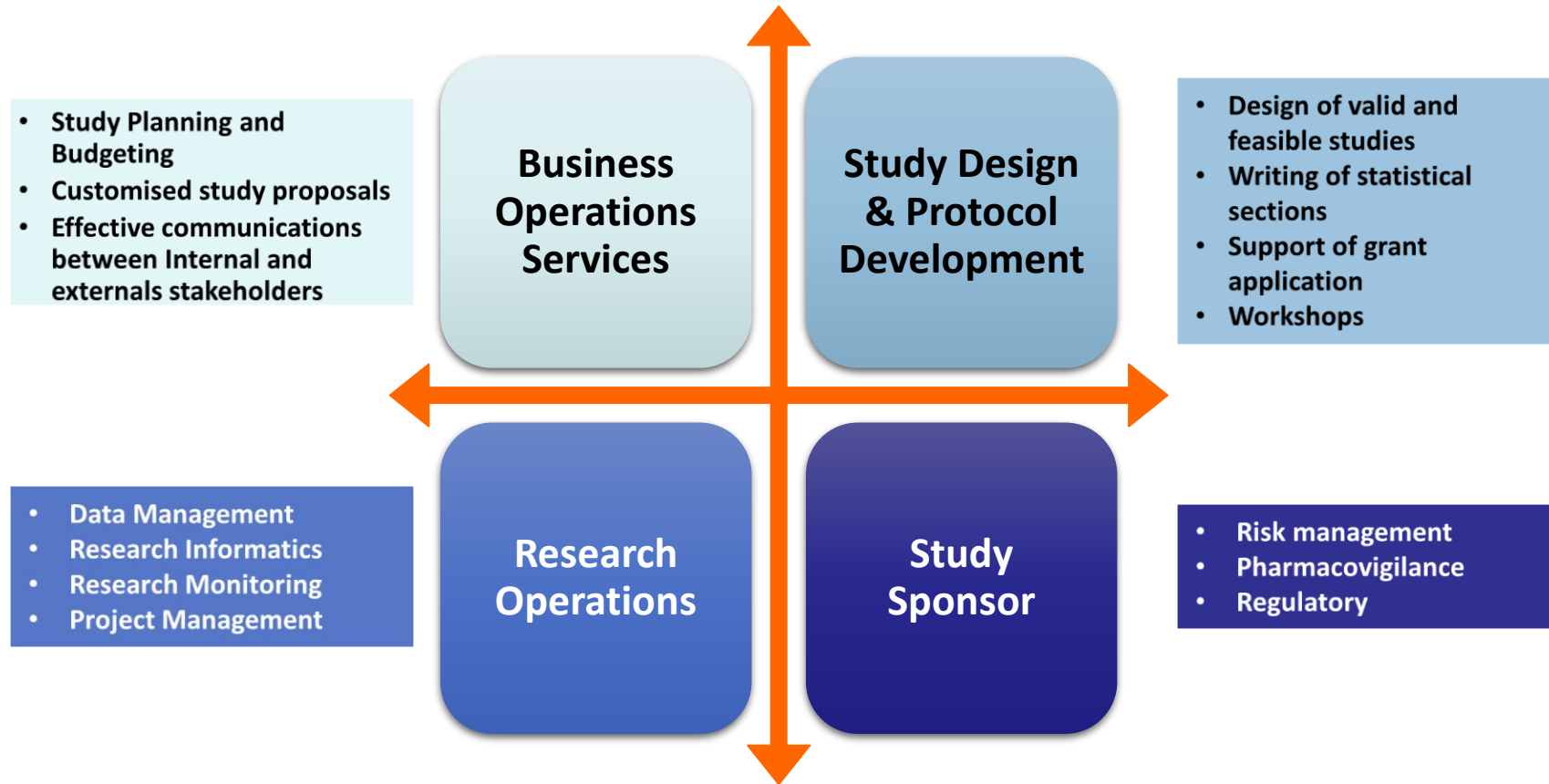
Commercial

Note: Many specific tasks may fall into more than one of these 3 domains e.g. The CT Network role is on a **National** scale but helps build-up **Academic** KOLs & attract **Commercial** trials

INNOVATION IN CLINICAL RESEARCH FOR THE NATION

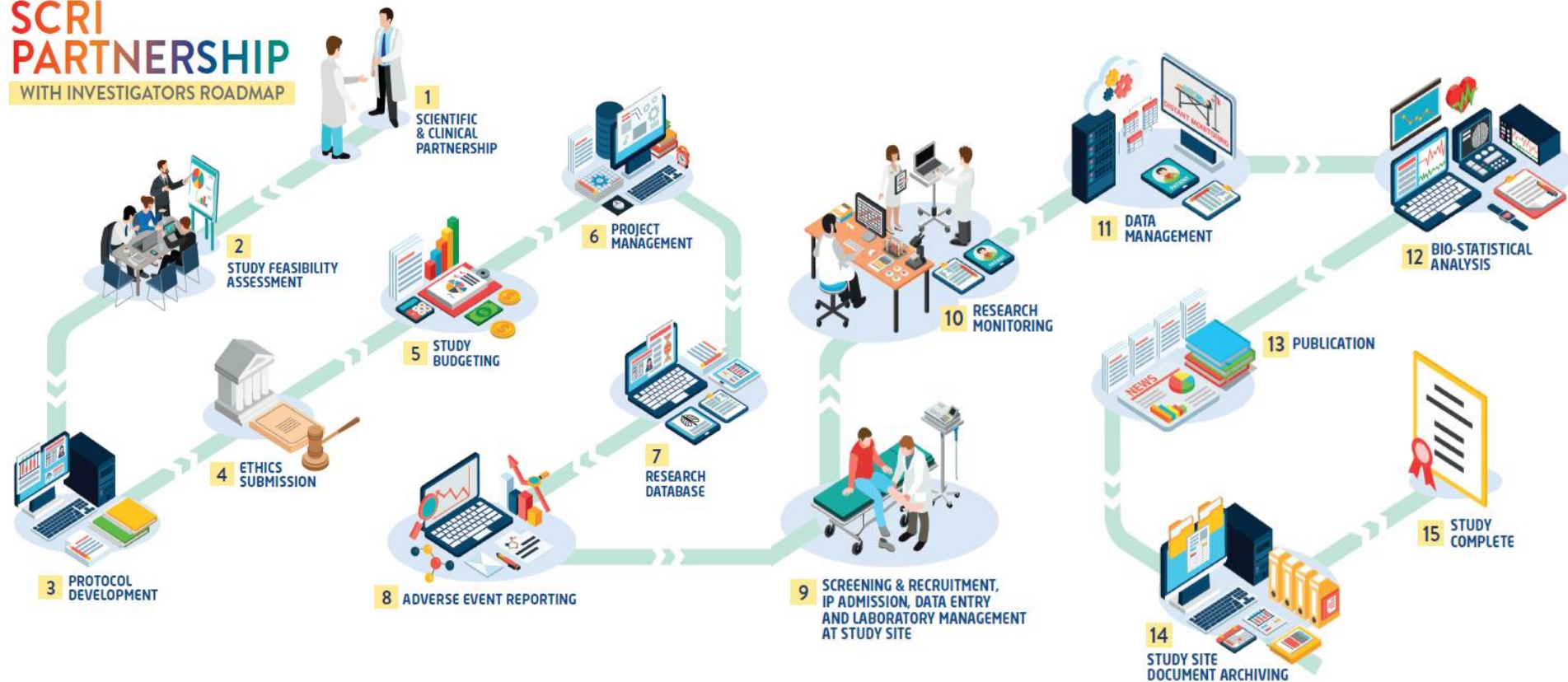


Academic Research Organisation



SCRI Partnership Roadmap

SCRI PARTNERSHIP WITH INVESTIGATORS ROADMAP



SCRI's expertise

Pre & Post Project Activities

- Study Design, Analysis and Reporting
- Evidence Synthesis
- Health Outcome Research
- Study Planning & Budgeting



Research Operations

- Project Management
- Research Informatics
- Randomisation
- Research Monitoring
- Data Management
- Pharmacovigilance
- Quality Assurance

What SCRI can help if a PI is planning to apply NMRC grant?

- Contact SCRI to ask for pre-grant support
 - Scientific and operational review on grant proposal
 - Sample size calculation
 - Scope operations budget (project management, monitoring, data management, data analysis)
 - This support is provided free to PIs
- If PI is successful in obtaining the study grant, SCRI can provide post-grant support:
 - Some of the logistics operations (eg project management, study monitoring, data management) at subsidized fee
 - Help PI to look for external outsource vendor
- When study completed, SCRI Biostatistician can help publication



Contact Us :

**Singapore Clinical Research Institute Pte Ltd
31 Biopolis Way, Nanos, #02-01 Singapore 138669**

contact@scri.edu.sg

www.scri.edu.sg

Follow us on Facebook

@SingaporeClinicalResearchInstitute



Thank you